



ProductReport

Alina Melnikova
Ma 4 - Id 8
Department of Architecture, Design
and Media Technology
Aalborg University
May 2012



Title Page

Project title

CombiClean

Theme

Master's Thesis

Project period

The 1st of February to the 23rd of May

Student name

Alina Melnikova

Supervisor

Finn Schou

Department of Architecture, Design and
Media Technology

Number of pages

12

Number of reports

5

CombiClean

The background of the entire page is a faded, high-key photograph of a cafe or restaurant interior. In the foreground, there are several round metal tables with matching square-patterned metal chairs. In the background, a service counter is visible with menu boards above it. A person in a white uniform is partially visible behind the counter. The overall atmosphere is clean and bright.

CombiClean from Vikan is a new generation of cleaning equipment that is designed with consideration of the users' needs. It offers a flexible solution on the preparation of mops 1-10 at a time, depending on the task.

Made with a starting point on the preparation, it is a product that meets all the needs that can occur during a cleaning process of the floor with the microfibre mops.

CombiClean is designed to make a cleaning process more smooth and easy.

The target environment is the retail businesses as restaurants, cafés and sandwich bars. The primary target group is employees at those places.

Functions

The new preparation product from Vikan has adapted the useful features from the existing product, and has also many new features integrated.

The ergonomic handle for the transportation

The flexible preparation of the mops/ The water controlling system

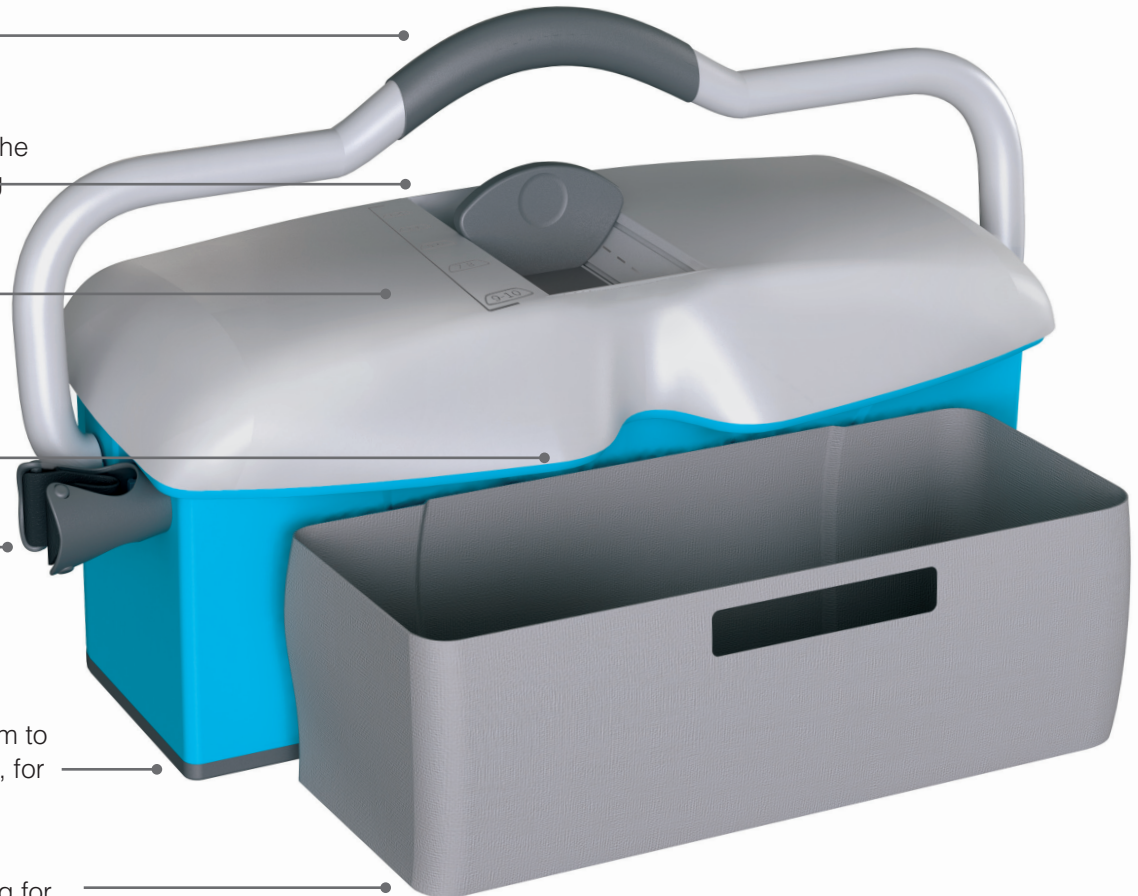
The intuitive indications

The pocket mop releaser

The holder for the mop handle

The nylon plate in the bottom to help with sliding the bucket, for better ergonomics

The hygienic attachable bag for used mops



Lid

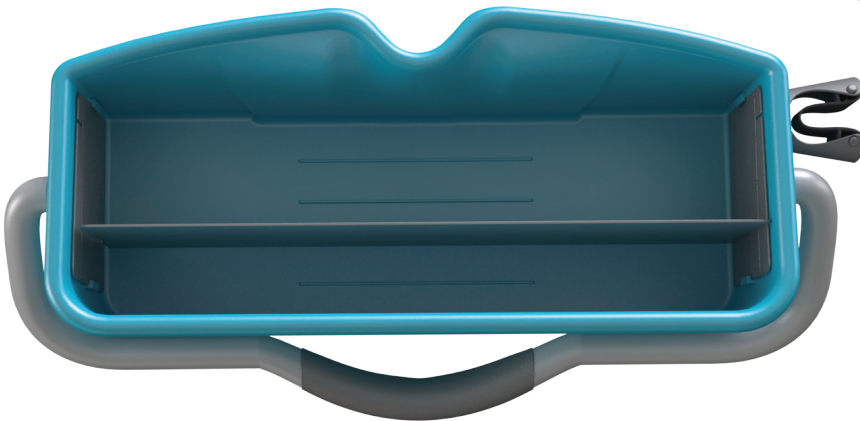
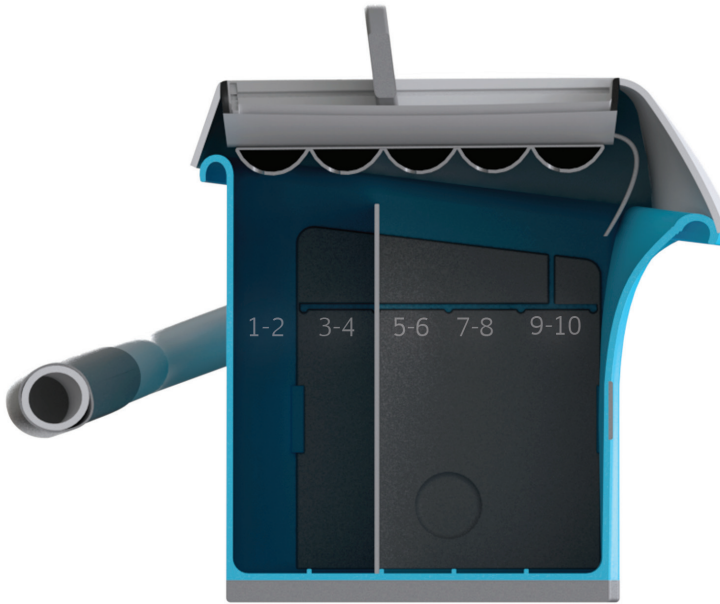
By opening and closing the holes in the lid it is possible to control the direction in which water will run. That secures a proper preparation of different amount of mops.

The grid distributes water equally throughout the mops.

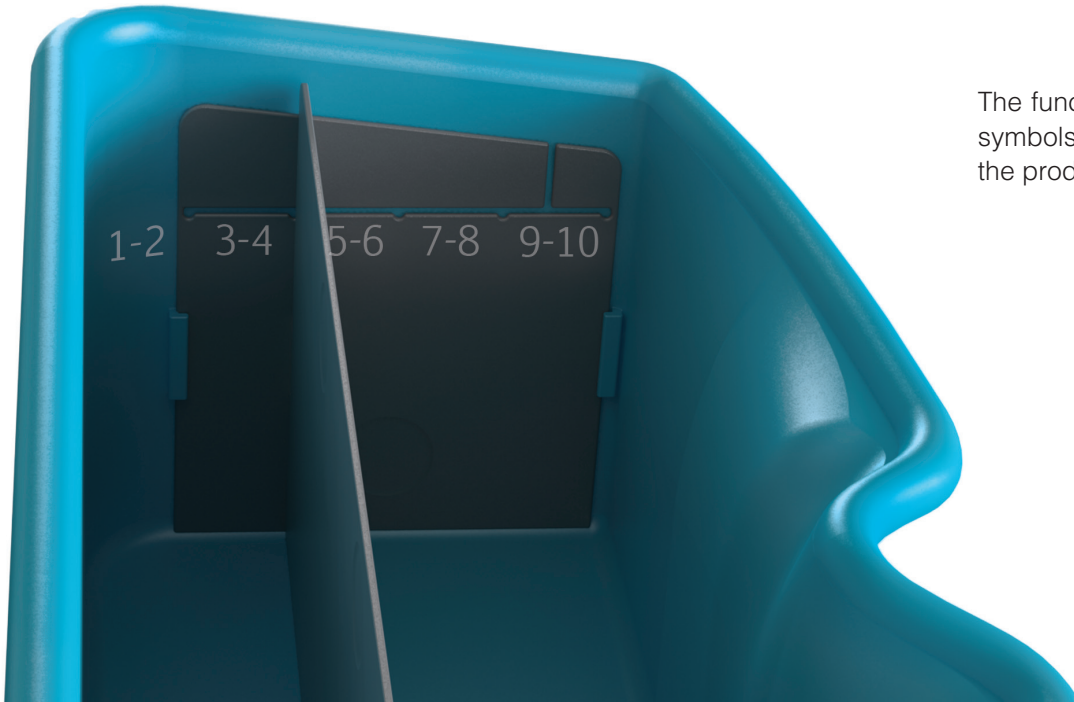
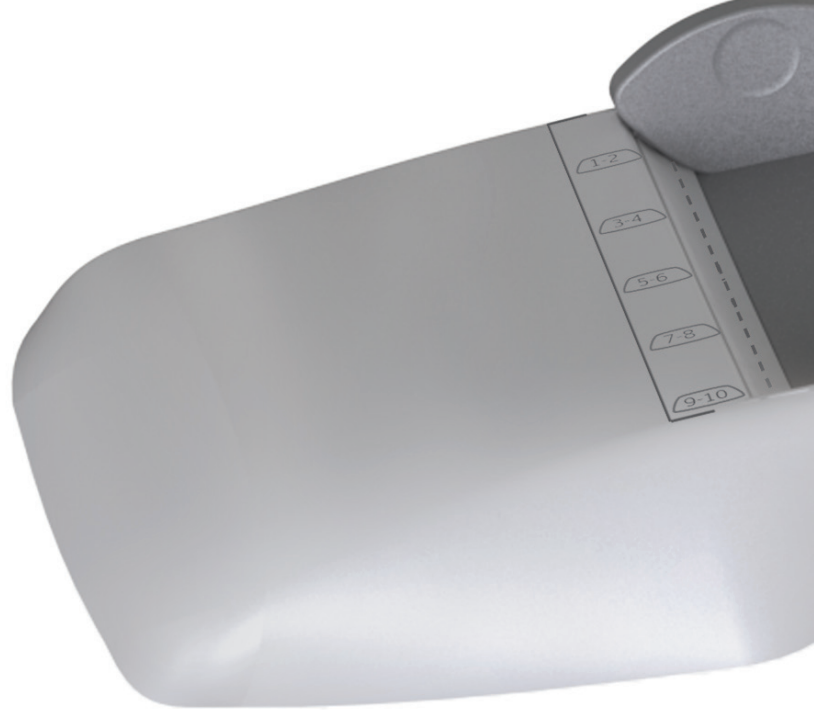


Bucket

As a part of the water controlling system, the bucket is divided into 5 equal areas. The division plate can be slid back and forth in the channels in the bucket. The ribs in the bottom stabilise the division plate and prevent it from turning.

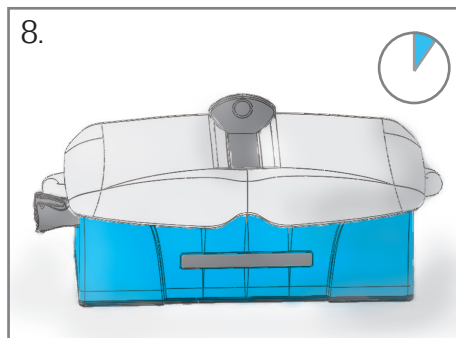
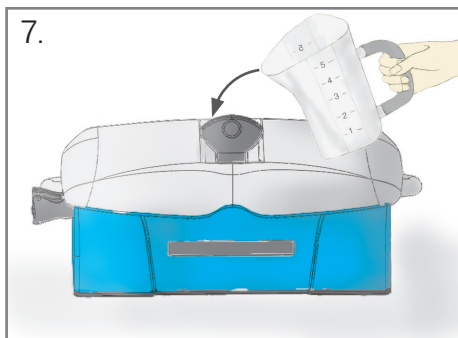
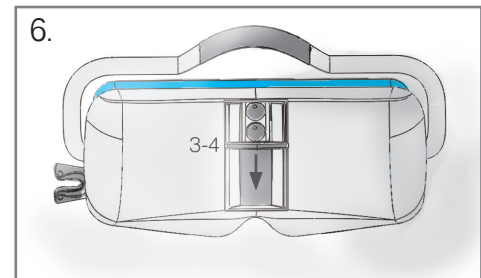
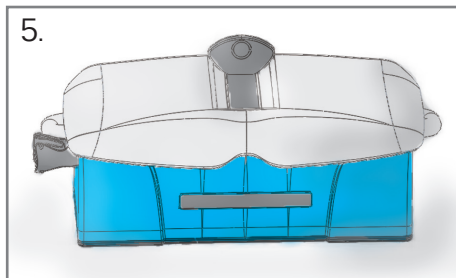
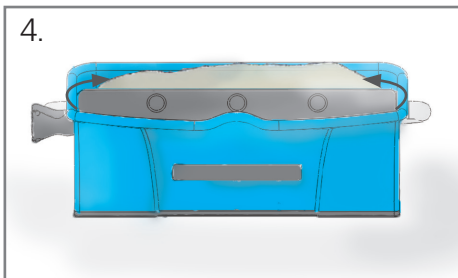
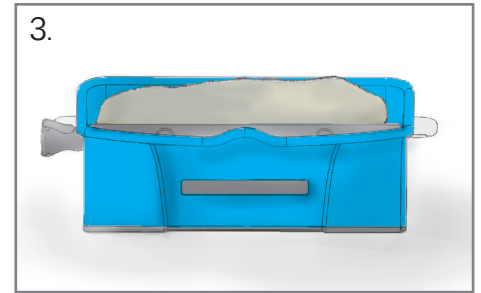
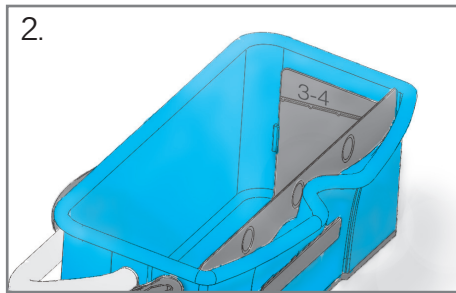
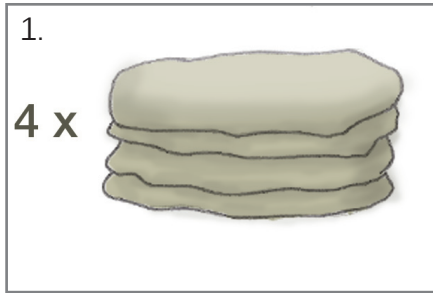


Interface



The functions are shown by small simple symbols, that makes the interaction with the product easy and intuitive.

Manual

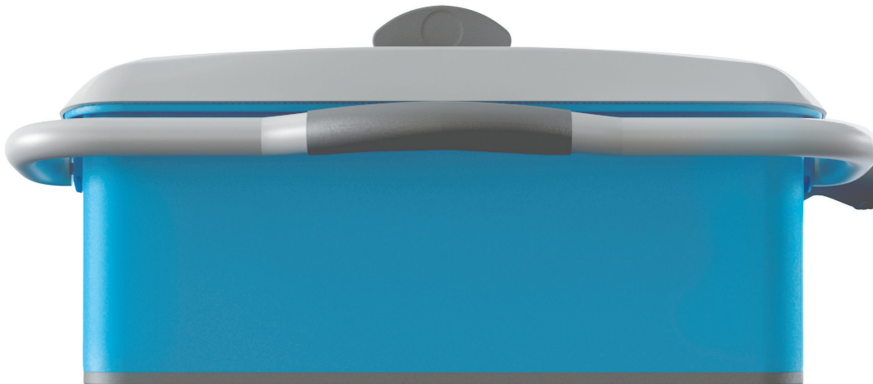
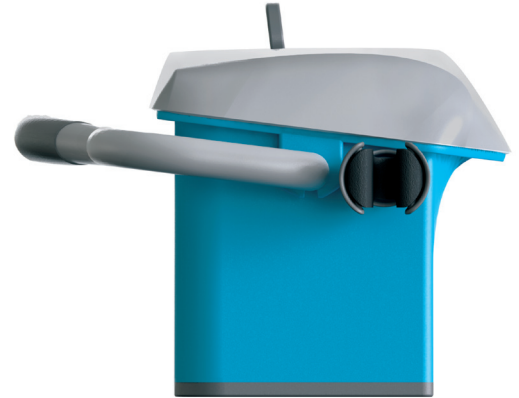


Your mops are ready.

Aesthetics

With the inspiration in dynamic lines from streamline products, CombiClean has got an organic shape that distinguishes the product from the other products on the market.

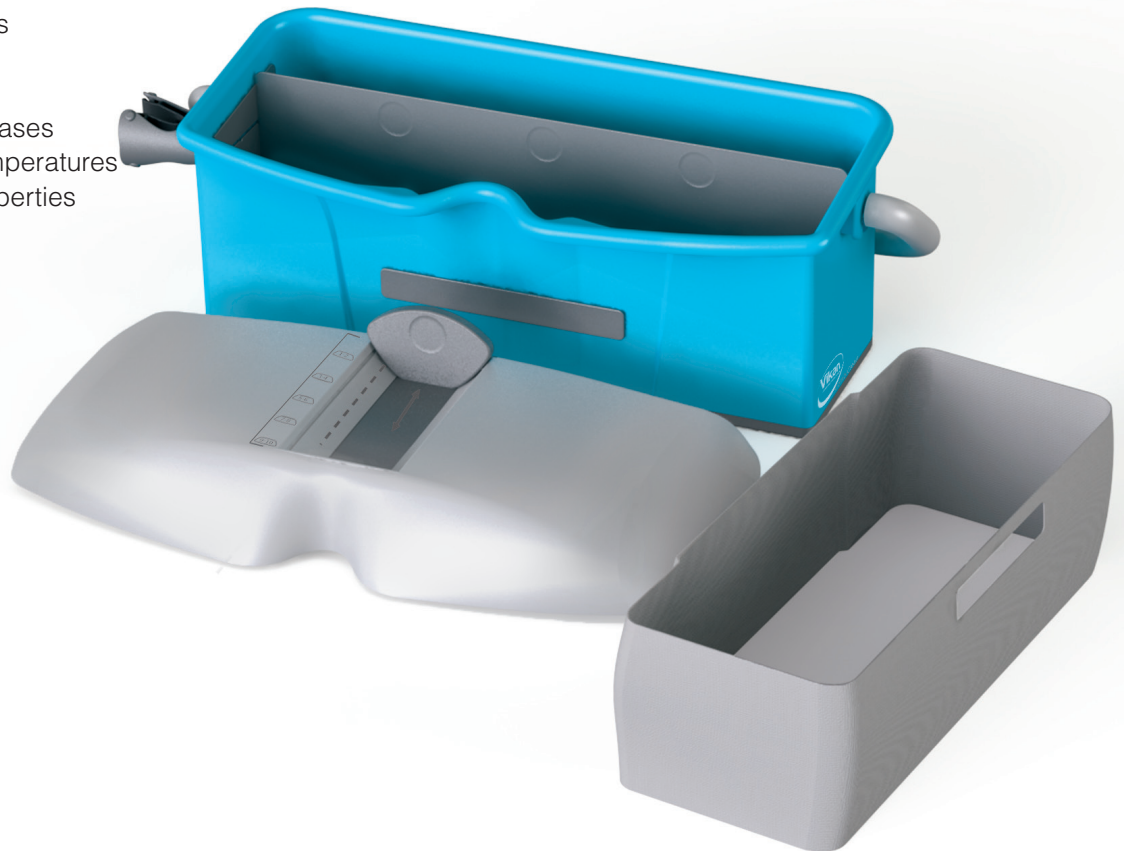
The product does not have two equal sides, and its shape can be interpreted in different ways. That makes it to a cleaning 'tooltoy'.



Materials

All materials used for the product are FDA approved and fit to the functional demands, for the cleaning equipment made for restaurants and coffee shops:

- Easy to clean
- Smooth surface that does not draw dust
- Good strength properties
- High impact
- Resistant to chemicals
- Resistant to acids and bases
- Can tolerate high temperatures without changing its properties



Colours

CombiClean is produced in 5 colours: blue, red, yellow, green and purple, which makes it to a part of Vikan's colour-coding system.

The other elements are designed in grey colours; main parts, lid, handle and bag for used mops have a light colour, the parts that can be attached to the main parts have darker colours.





Synopsis

The product report is the second of the two reports. It presents the new product, CombiClean, made for the preparation of the mops and cleaning of the floor.

The details about the functions, aesthetics, user scenario and materials are shown in this report.