

GREEN ZONE

A HEALING PLACE FOR VETERANS

presentation

Jakob Rosendahl Haar & Michael Lindegaard Pedersen
Master Thesis 2012 - ma4-arch25 - Aalborg University

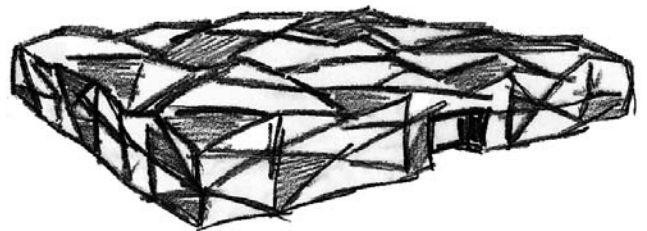


TABLE OF CONTENT

Site plan	5
Exterior expression	7
North East and South East elevations	9
Arrival	11
Plan	13
Section AA	15
Training facilities	17
Section BB	19
Common area	21
South West and North West elevations	23
Living area	25
Energy	27
Building stamp	28
Foundation and drain detail	29
Canapy detail	30
Built-in window detail	31



SITE PLAN 1:2000



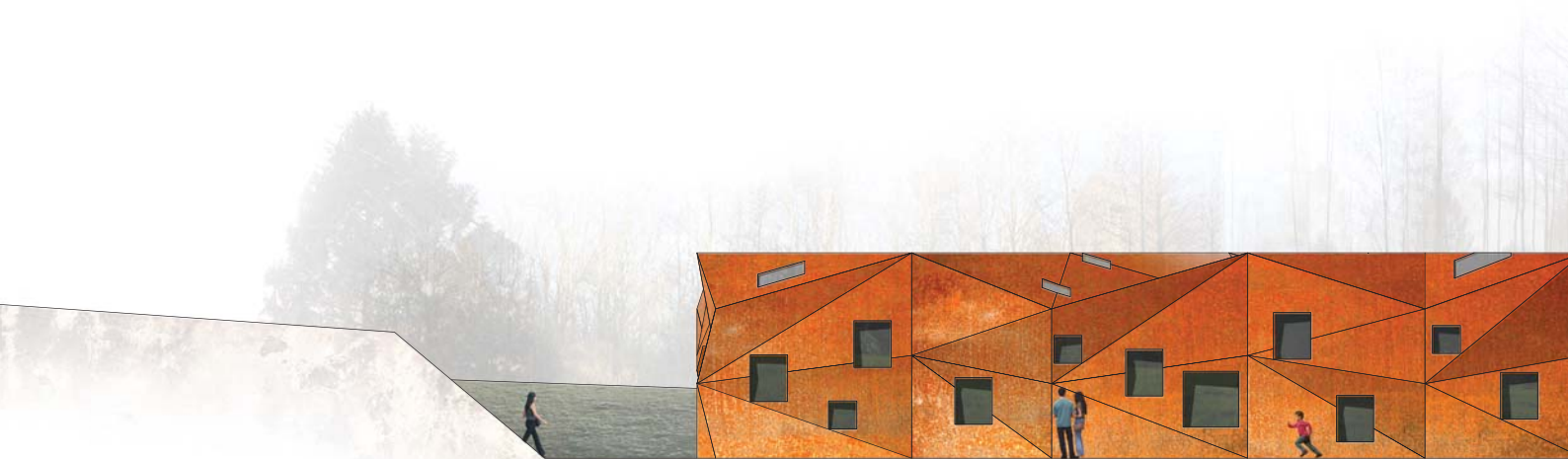




OBSERVING THE CENTRE FROM A DISTANCE, MAKES THE EXPRESSIVE TRIANGULATED STRUCTURE STAND OUT AS AN OBJECT, EMPHASISING THE ORGANIC LANDSCAPE



SOUTH EAST ELEVATION 1:200



NORTH EAST ELEVATION 1:200

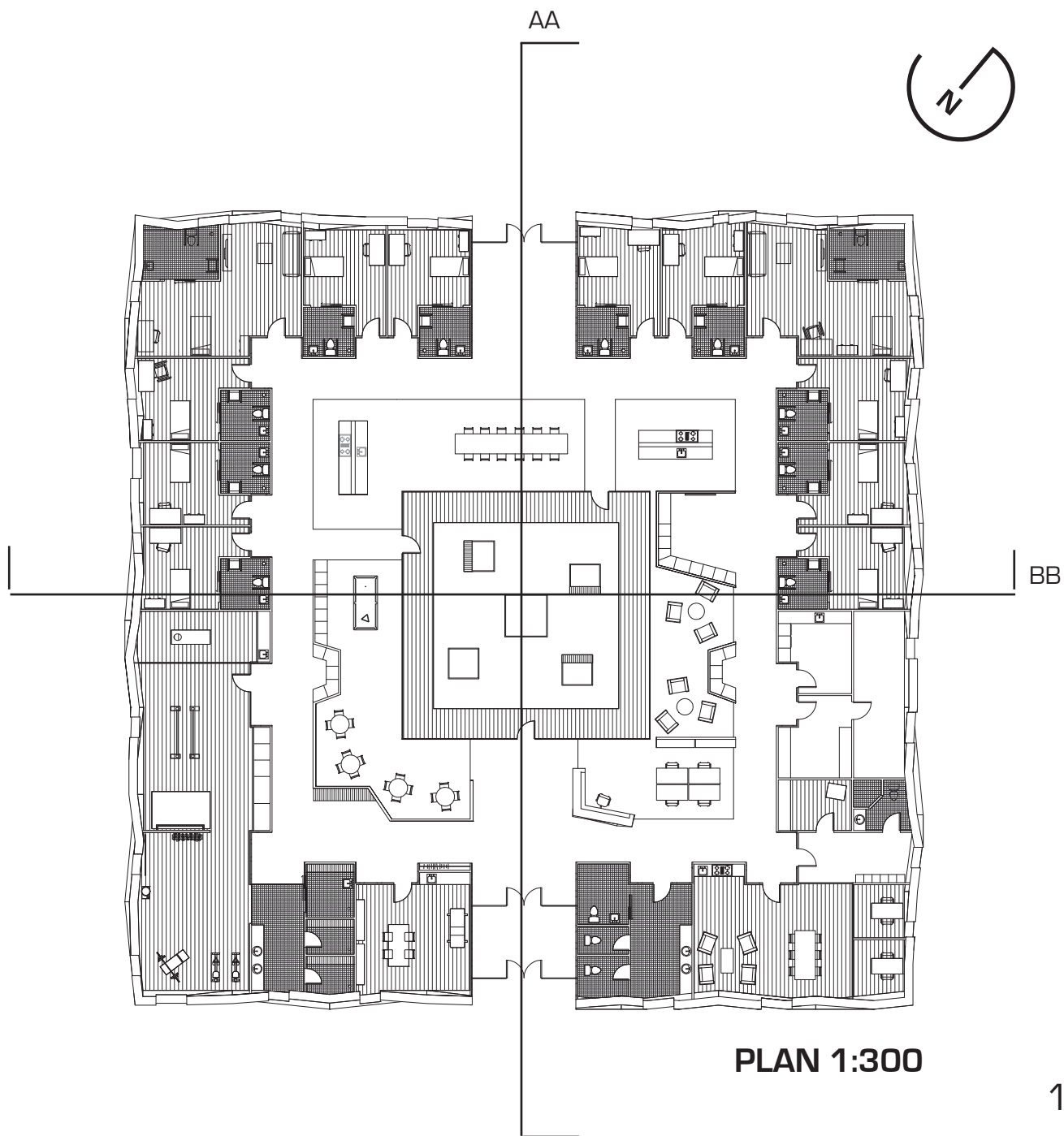






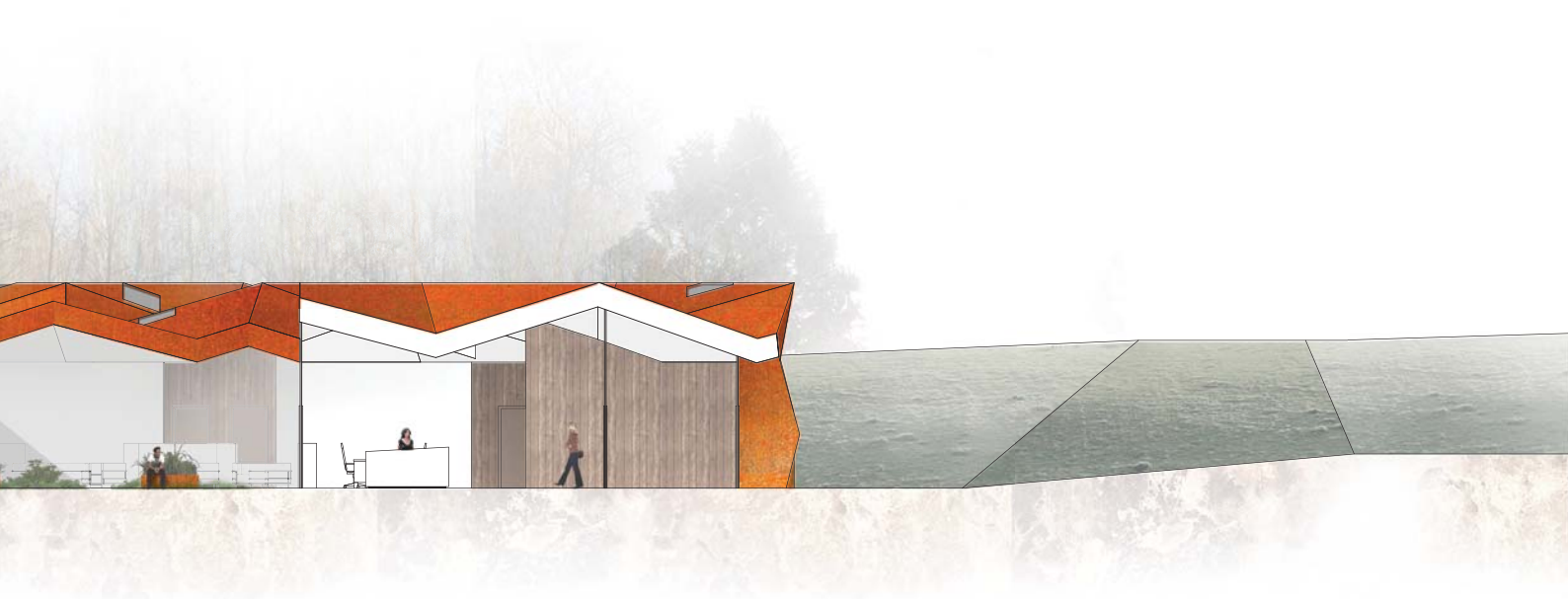
**WHEN ENTERING THE BUILDING, IT OPENS UP AND
WELCOMES THE VISITOR WITH A BRIGHT DAYLIGHT
AND A VIEW TO THE MAGNIFICENT GARDEN**

THE INTERIOR ORGANISATION IS BASED ON A SIMPLE PLAN WITH THE FACILITIES DIVIDED INTO DIFFERENT ZONES. THE PRIVATE AND CLOSED AREAS ARE SITUATED IN THE PERIPHERY OF THE BUILDING WITH THE COMMON AREAS CENTERED AROUND THE GARDEN.





SECTION AA 1:200





**IN THE AREA FOR PHYSICAL TREATMENT THE FOLDED STRUCTURE
REALLY BECOMES VISIBLE. A RICH DAYLIGHT ENTERS THE ROOM
FROM THE HIGHLY DISTRIBUTED WINDOWS AND A VIEW OF NA-
TURE IS REVEALED**



SECTION BB 1:200







THE KITCHEN AREA IS THE SOCIAL GATHERING POINT FOR THE LIVING AREA, WHERE BIG CURTAIN WALLS SERVES TO CREATE A VISUAL CONNECTION TO THE GARDEN



This architectural rendering shows the North West Elevation of a building at a scale of 1:200. The building features a complex, multi-faceted facade with various triangular and polygonal sections in shades of orange and red. Several dark, rectangular windows are integrated into the design. To the left of the main building structure is a smaller, grey, rectangular volume. The building is situated on a light-colored, textured ground. In the background, a dense forest of tall, thin trees is visible under a hazy, overcast sky.

NORTH WEST ELEVATION 1:200



This architectural rendering shows the South West Elevation of the same building at a scale of 1:200. The building's facade is composed of various triangular and polygonal sections in shades of orange and red, with several dark, rectangular windows. To the left of the main building structure is a smaller, grey, rectangular volume. The building is situated on a light-colored, textured ground. In the background, a dense forest of tall, thin trees is visible under a hazy, overcast sky. Two small figures of people are standing on a path to the left of the building, providing a sense of scale.

SOUTH WEST ELEVATION 1:200



**THE SIMPLE LIVING SPACE SERVES THE BASIC NEED FOR
PRIVACY. THE PROPORTIONS OF THE ROOM IS OPTIMISED
TO LET IN A SATISFYING DAYLIGHT**





AXONOMETRIC PLAN

DEMANDS	
LOW ENERGY BUILDING 2015	41.8 KWH/M ²
SUPPLEMENT FOR SPECIAL CONDITIONS	14.1 KWH/M ²
TOTAL ENERGY FRAME	55.9 KWH/M ²
CALCULATED	
ENERGY FRAME	55.7 KWH/M ²

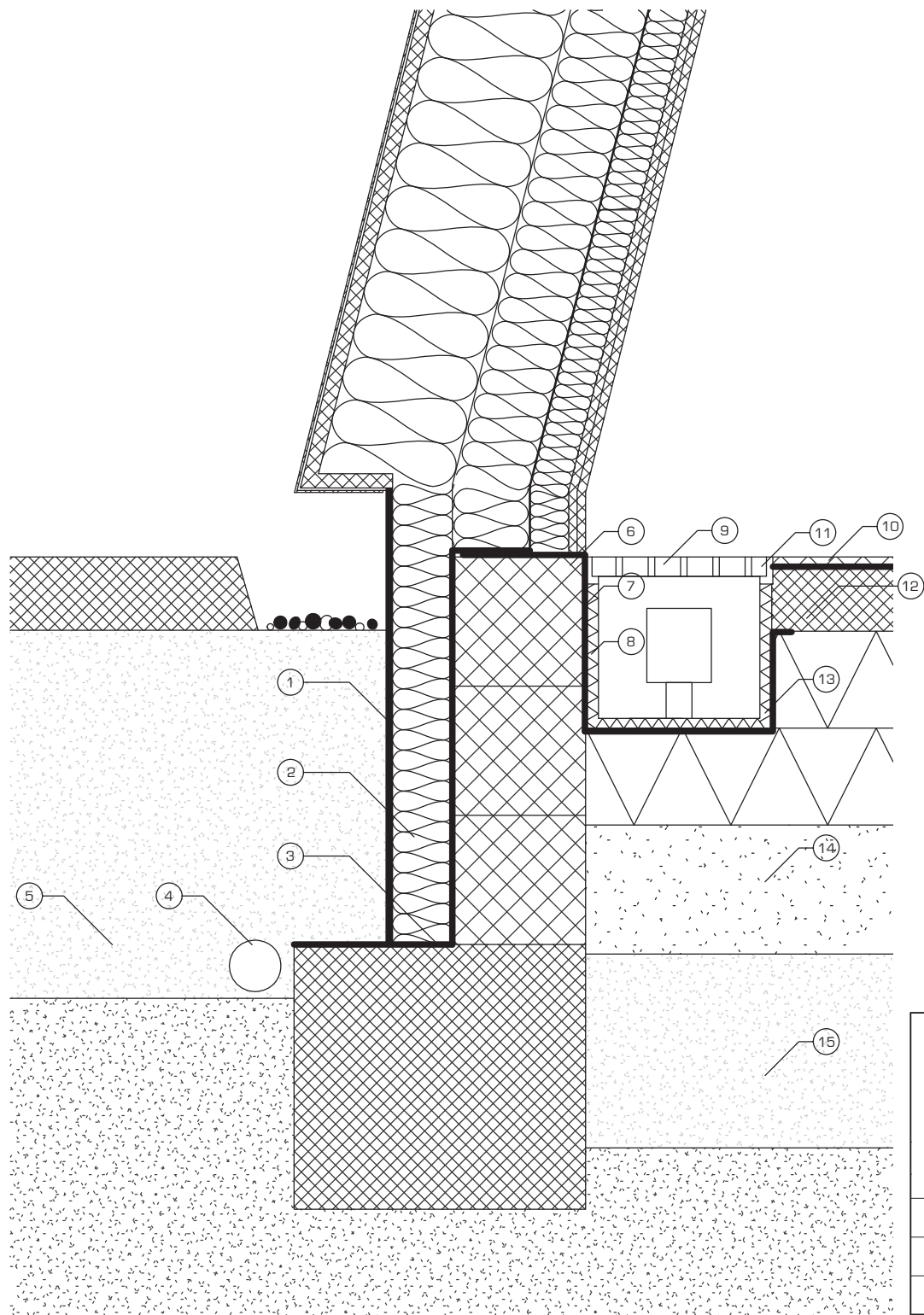
BE10 data

ZONES	APARTMENT	TREATMENT	STAFF	COMMON
AIR CHANGE (h ⁻¹)				
MEAN	1.16	1.17	0.97	1.57
MAX	4.82	3.06	3.41	5.05
TEMPERATURE (h)				
< 20 C °	0	0	0	0
> 21 C °	8760	8425	8574	8702
> 26 C °	0	0	0	84
> 27 C °	0	0	0	25
CO ₂ (ppm)				
MEAN	561.7	588.3	562.5	470
MAX	1011.1	992.2	824.3	854.3

BSIM data



**WHEN WALKING ALONG THE BUILDINGS FACADE THE
EXPRESSION OF THE TRIANGULATED STRUCTURE COMES
CLEARLY INTO SIGHT**



- ① Asphalt rendering
- ② 95 mm insulation
- ③ Water-resistant layer
- ④ Drain
- ⑤ Dense sand
- ⑥ Leca blocks
- ⑦ Radon barrier
- ⑧ Rigid insulation material
- ⑨ Convective pit
- ⑩ 22 mm wooden floorboards
- ⑪ 2 mm Soundabsorbing fibre cloth
- ⑫ 100 mm Concrete
- ⑬ 2 x 150 mm rigid insulation material
- ⑭ 200 mm Capillary break layer
- ⑮ Dense sand



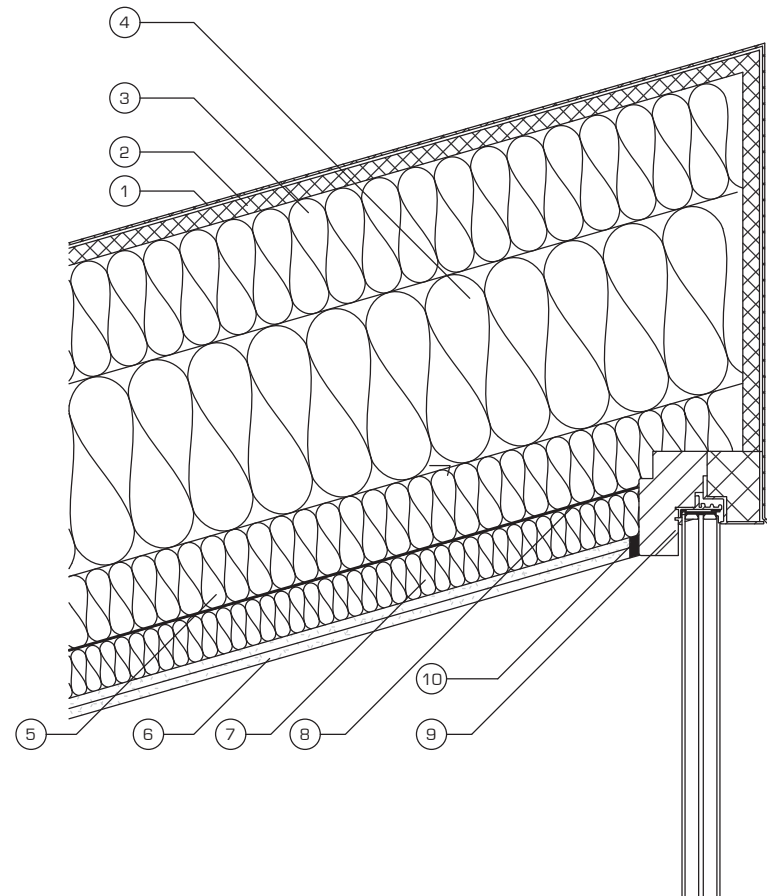
GREEN ZONE

A HEALING PLACE FOR VETERANS

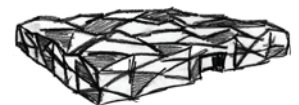
Foundations and drain detail

Date 23.05.2012

Scale 1:10



- ① 3 mm corten steel facade elements
- ② Montage elements with are diffusion-open and water-resistant
- ③ 150 mm Insulation
- ④ 245 mm Insulation
- ⑤ 95 mm Insulation
- ⑥ 2 x 13 mm Plasterboard
- ⑦ 60 mm Insulation
- ⑧ Vapor barrier
- ⑨ Enersign window
- ⑩ Finishing joint



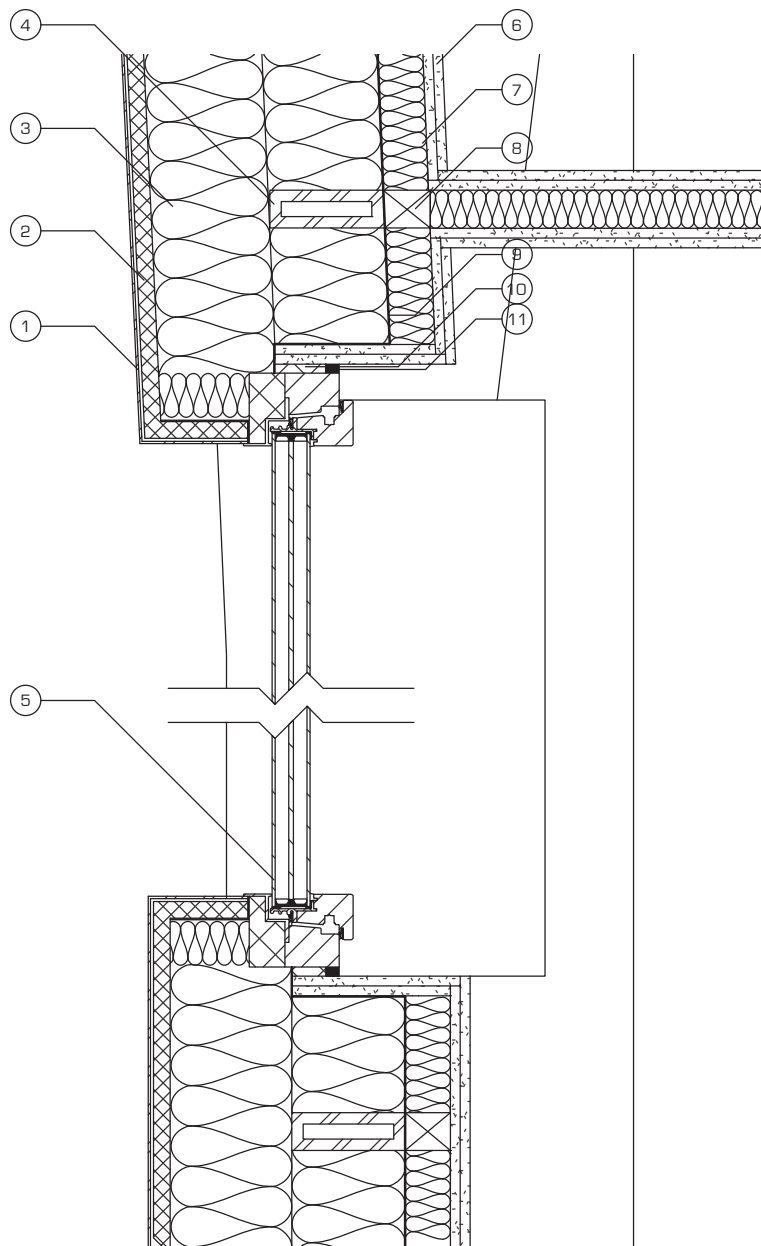
GREEN ZONE

A HEALING PLACE FOR VETERANS

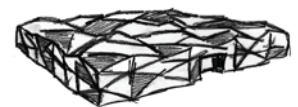
Unnamed

Date 23.05.2012

Scale 1 : 10



- ① 3 mm corten steel facade elements
- ② Montage elements with are diffusion-open and water-resistant
- ③ 2 x 155 mm Insulation
- ④ Load bearing construction consting of a square steel profile
- ⑤ Enersign window
- ⑥ 2 x 13 mm Plaster board
- ⑦ 60 mm Insulation
- ⑧ Wood montage boards
- ⑨ Vapour barrier
- ⑩ Rigid Insulation
- ⑪ Finishing joint



GREEN ZONE

A HEALING PLACE FOR VETERANS

Build-in window detail

Date 23.05.2012

Scale 1 : 10