



A product to help
arthritis sufferers in the
kitchen

Product report AD10-ID Naroa Luque May 2011



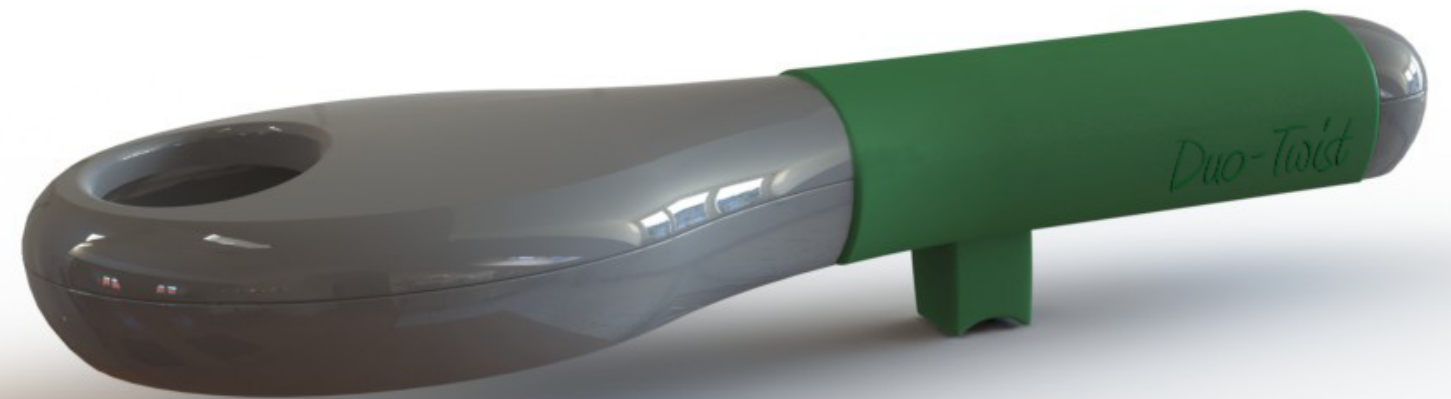
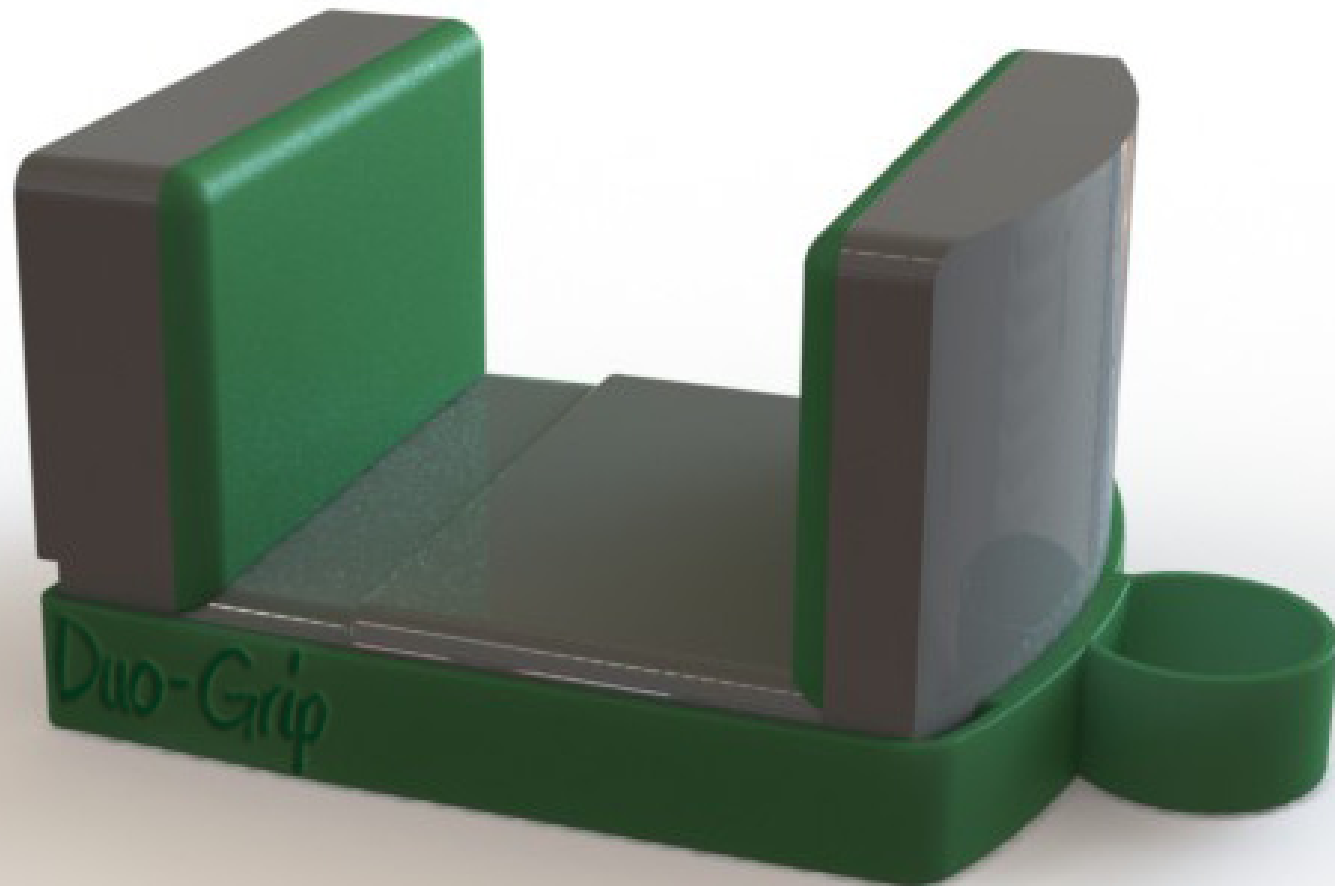


Who has not had difficulties opening a jar or a bottle sometime? For people that suffer arthritis, this is an every-day life issue. And is not only with lids that are very tight; because of their weakened hands and wrists, they have trouble opening many kind of containers. It is difficult to make twisting movements to turn the lids, also to grip the lid while turning it. If the top is very small and the arthritis severe, is not possible to make the required pinching effort. Besides the effort that makes the hand that turns the lid, we need to add the effort of the hand that is holding the container.

The product that is presented in the next pages has been designed with the objective of solving this problem, making easier to twist the lid and eliminating the effort that the gripping hand needs to make. It has been designed considering that a person that has arthritis must be able to use it, but is designed for anybody who has a hard time opening jars and/or bottles.



DUO-Grip holds the product so it is not necessary to apply any strength gripping the container. The flat wall is supported on the wall, and the container is placed between both walls. As the flat surface is supported on the wall, the turning momentum of the container is avoided. The product does not need any kind of mounting, so when we finish using it we can put it back in the closet.



DUO-Twist helps carrying out the twisting of the lid, the long handle decreases the amount of force that needs to be applied. It adjust to different lid sizes by moving back and forward the slider underneath the handle. This forward movement decreases the diameter of a rubber band placed inside the product, which can be visible trough the oval hole on the top.



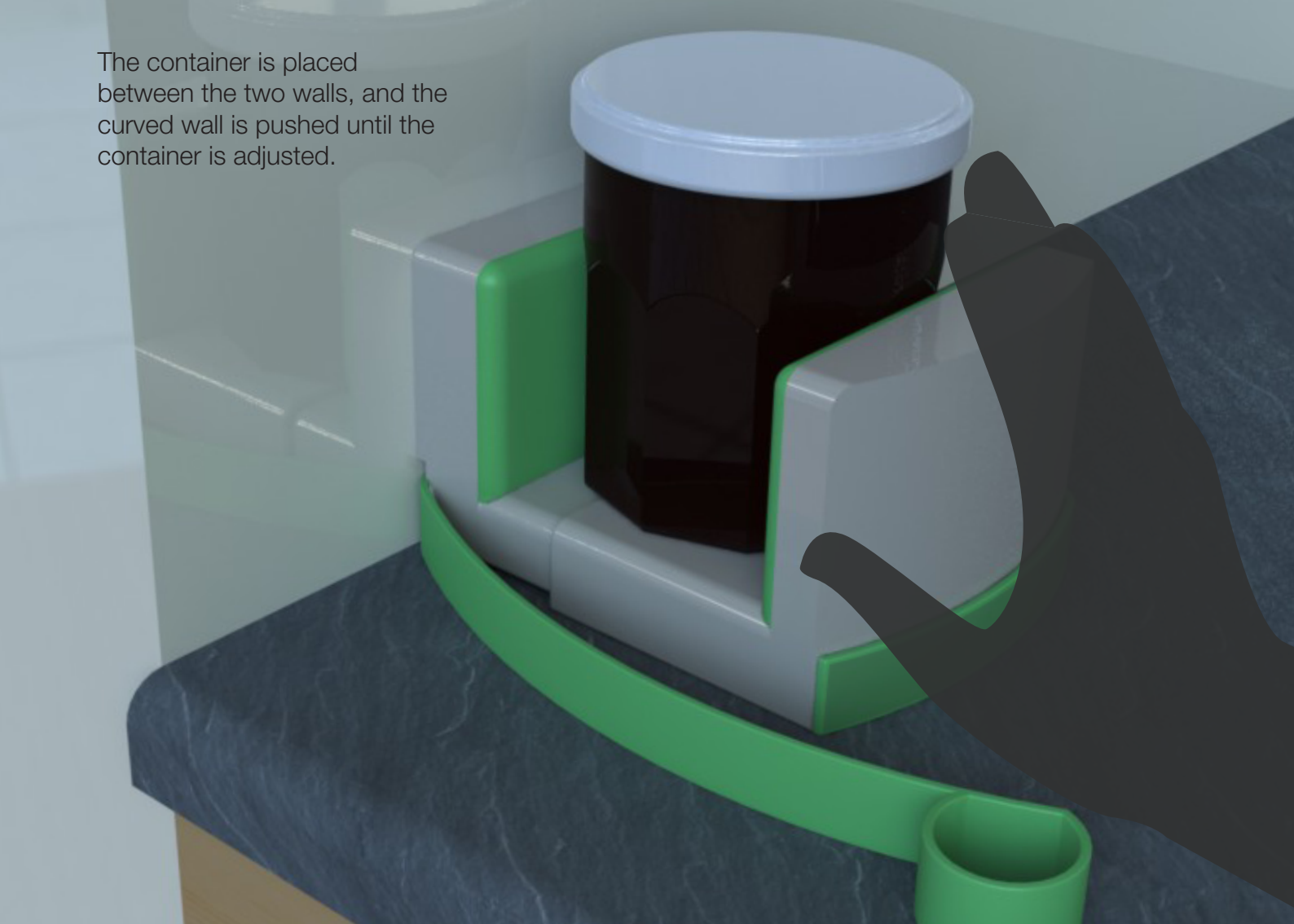
DUO- Grip

USE SCENARIO

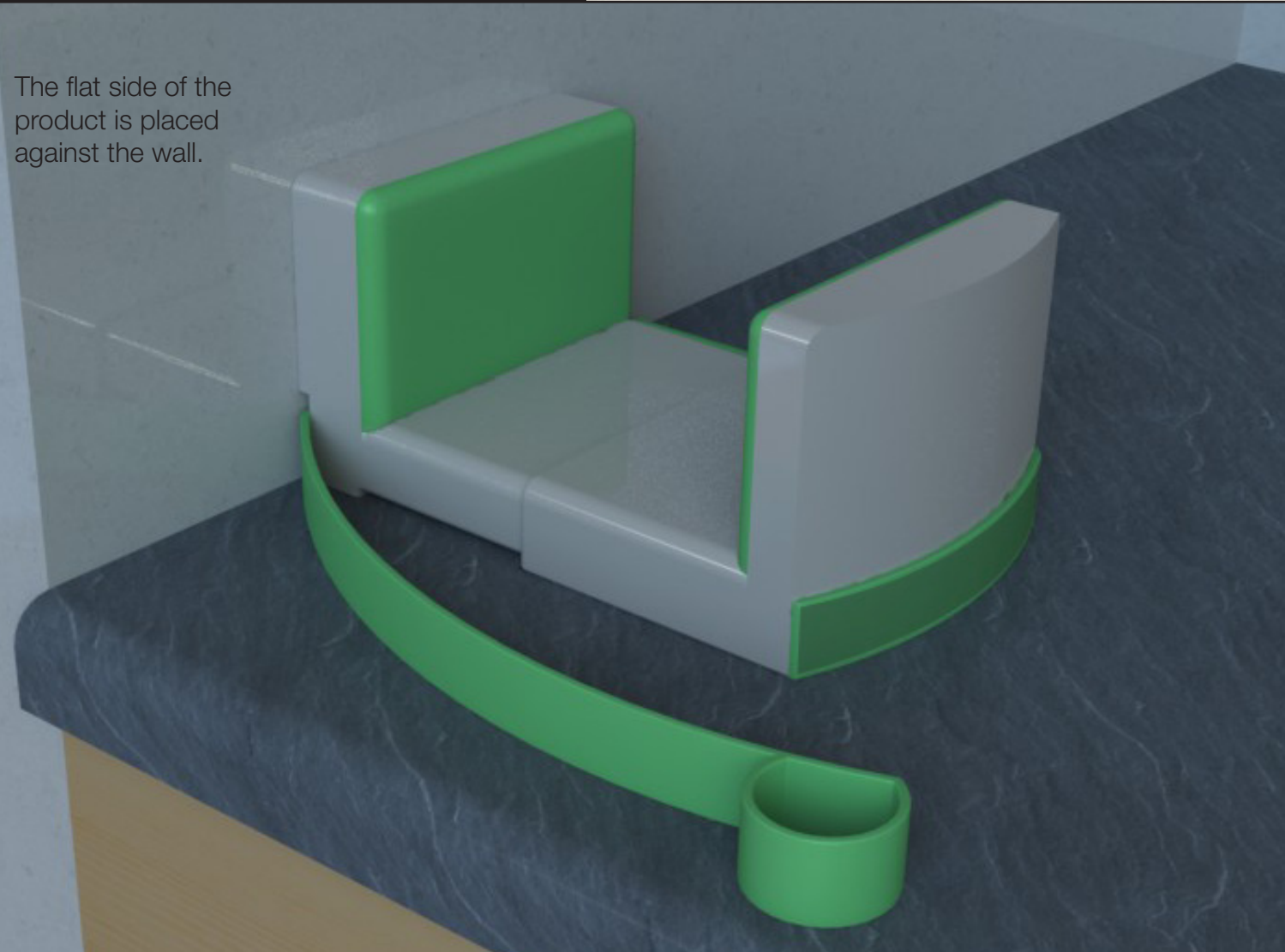
In the next pages an use case of the combination of both products is presented. Starting with the explanation of how to adjust the jar to DUO-Grip, in the next spread DUO-Twist comes into the scene.



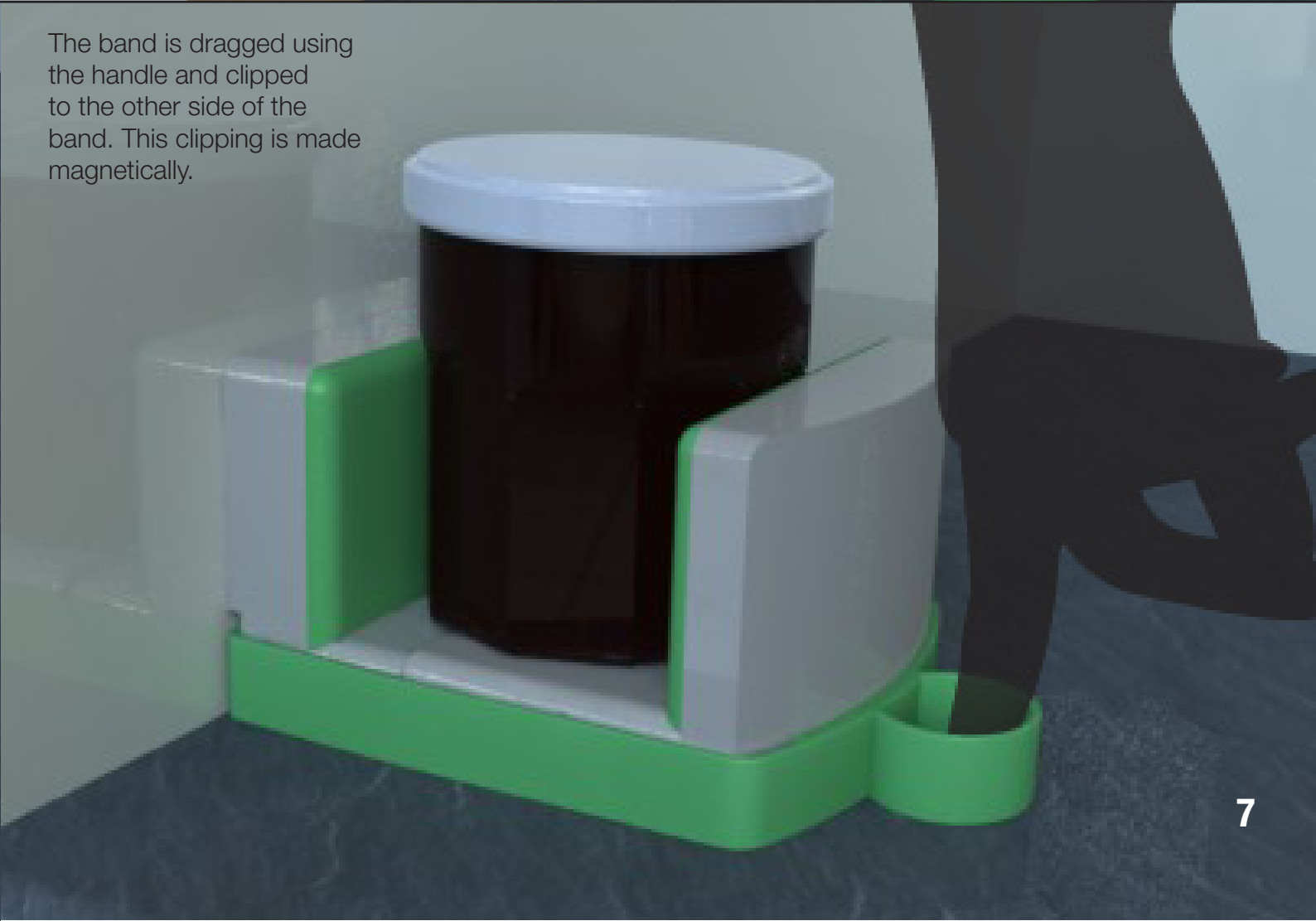
The container is placed between the two walls, and the curved wall is pushed until the container is adjusted.



The flat side of the product is placed against the wall.



The band is dragged using the handle and clipped to the other side of the band. This clipping is made magnetically.



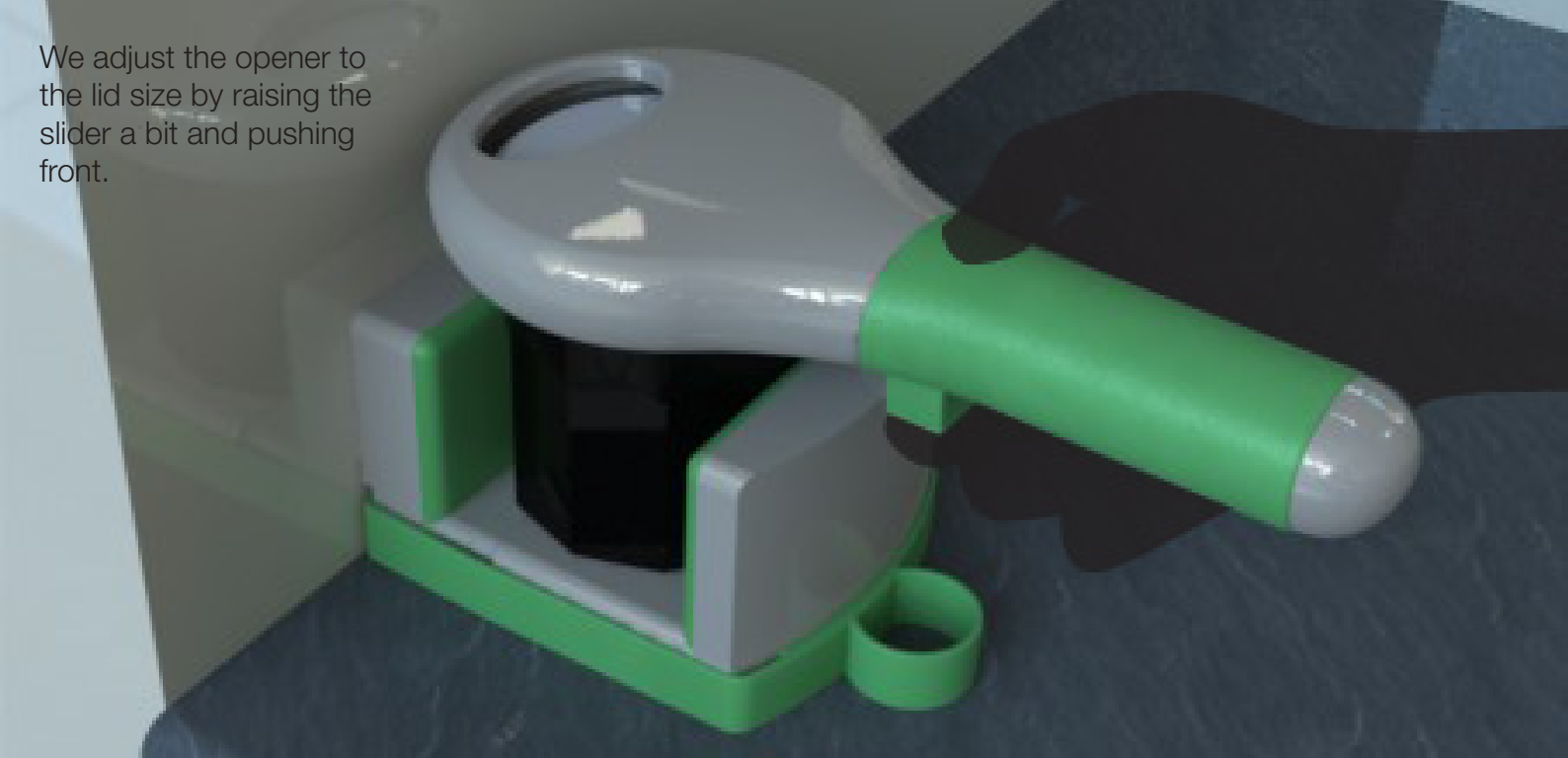
DUO-Twist

USE SCENARIO

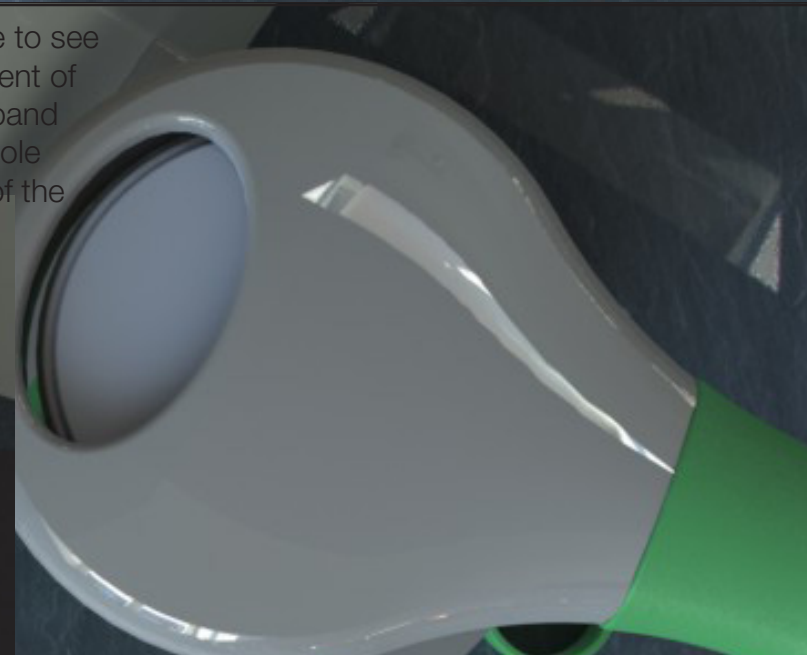
In the next pages an use case of the combination of both products is presented. Starting with the explanation of how to adjust the jar to DUO-Grip, in the next spread DUO-Twist comes into the scene.



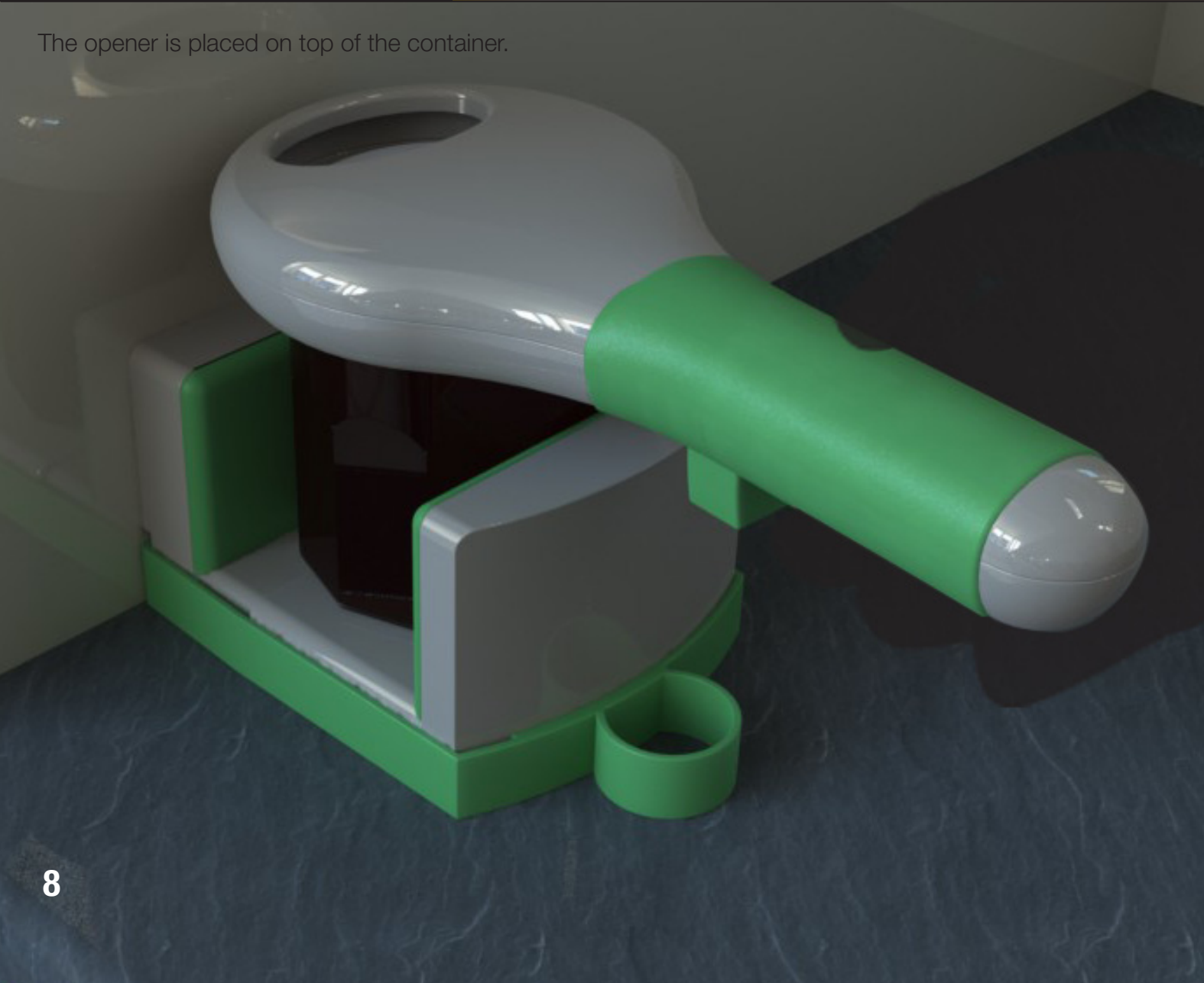
We adjust the opener to the lid size by raising the slider a bit and pushing front.



It is possible to see the adjustment of the rubber band from the whole on the top of the opener.



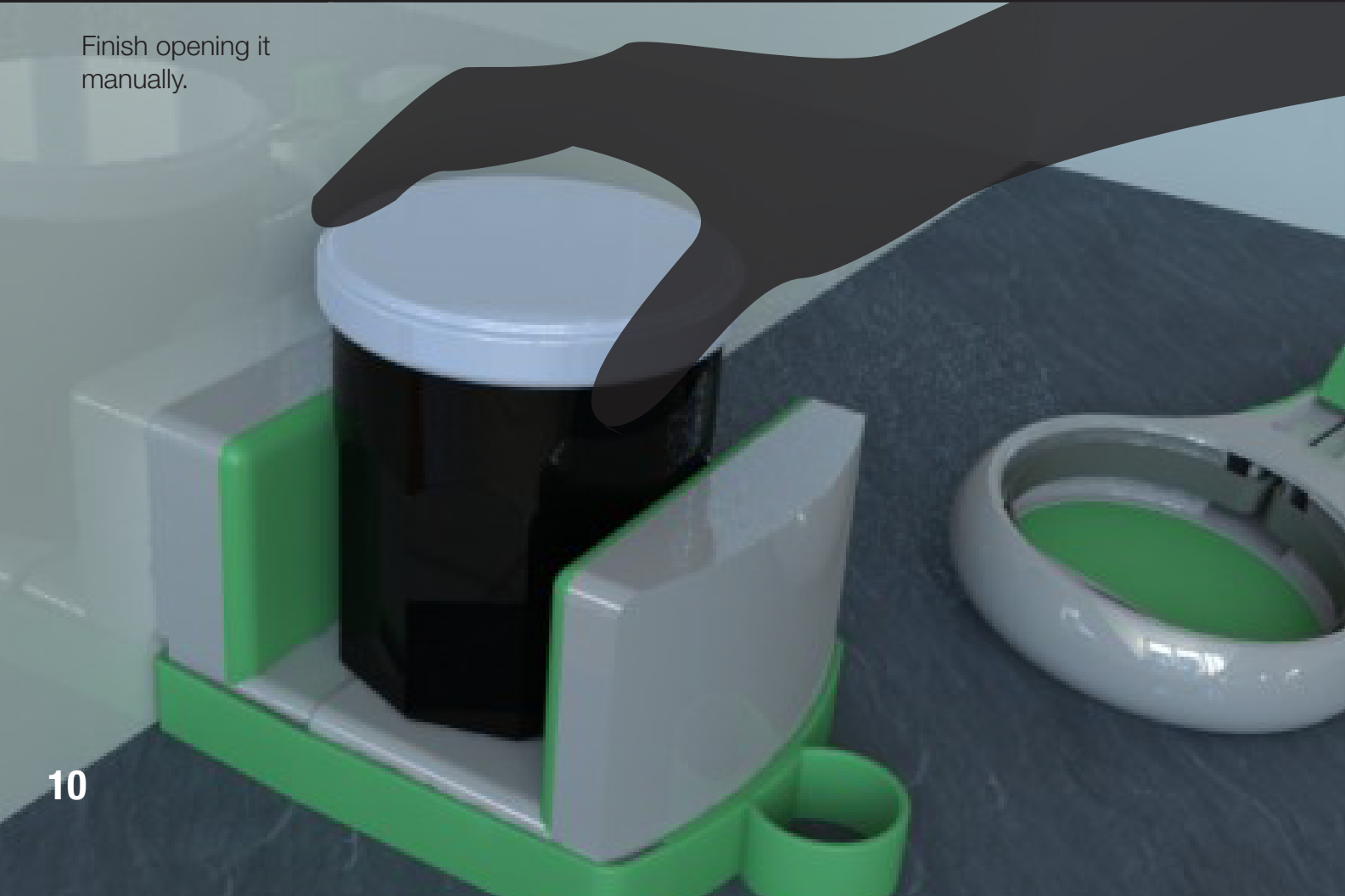
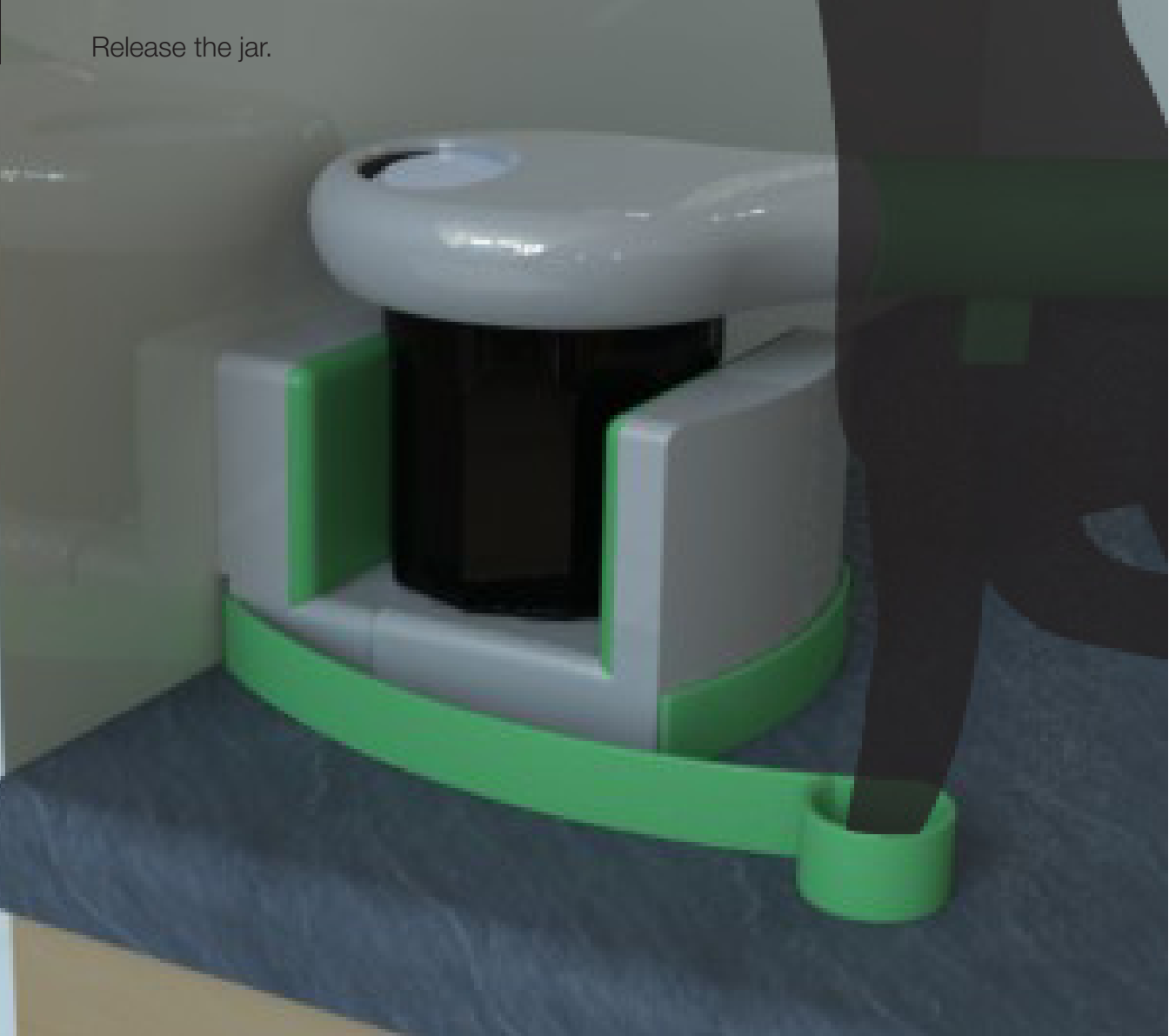
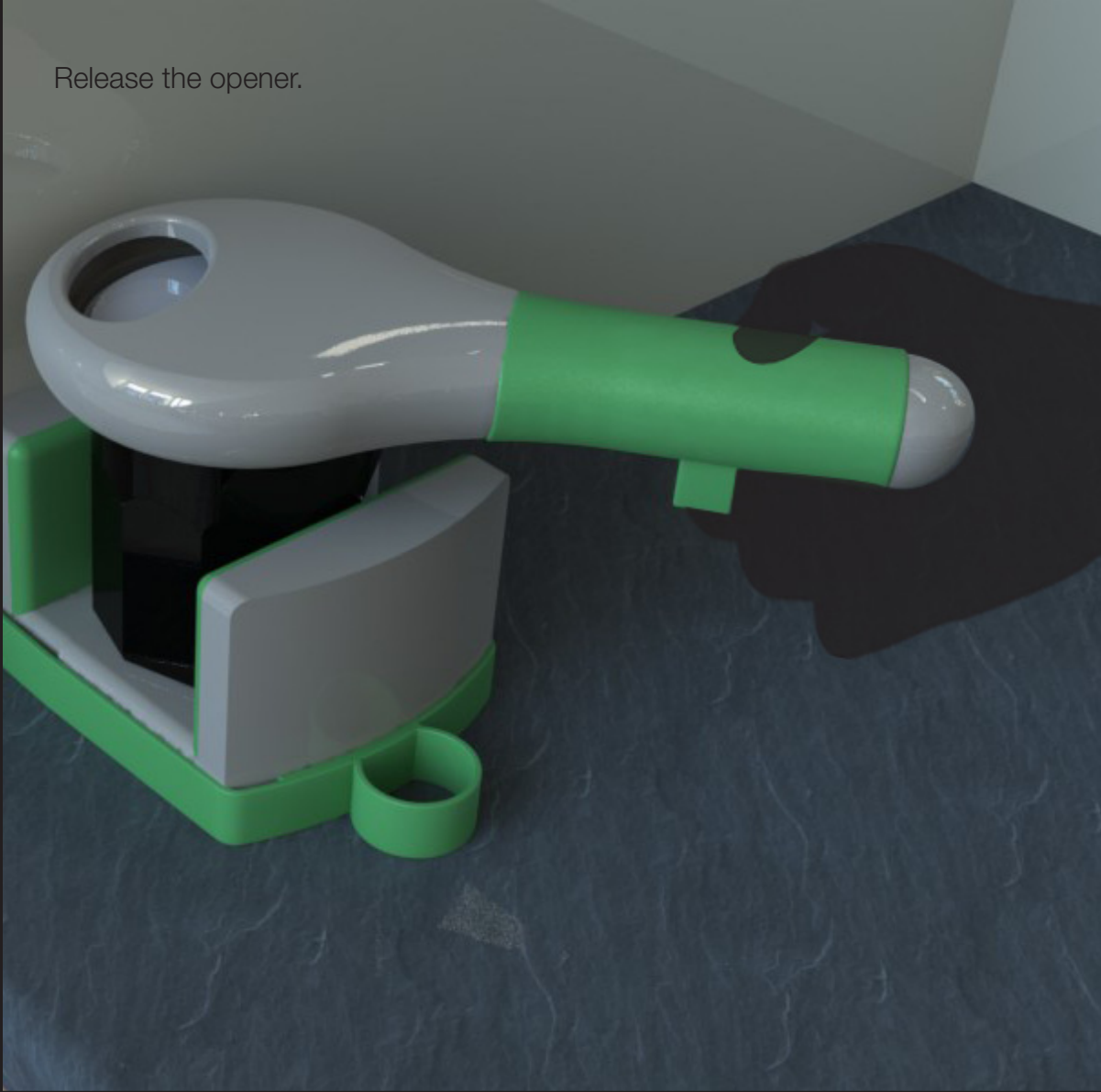
The opener is placed on top of the container.



Once the band is adjusted, we turn the opener to open the lid.

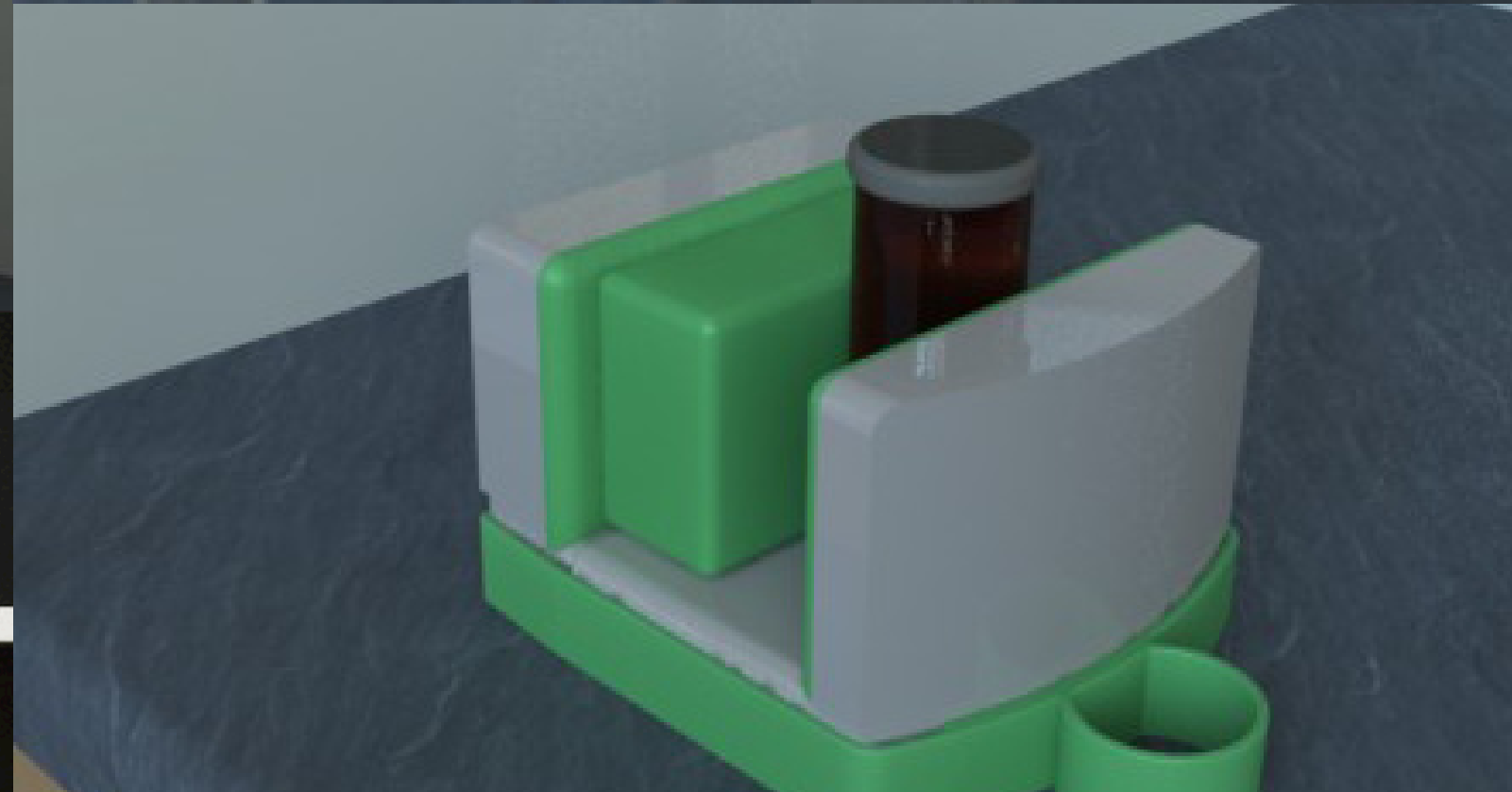
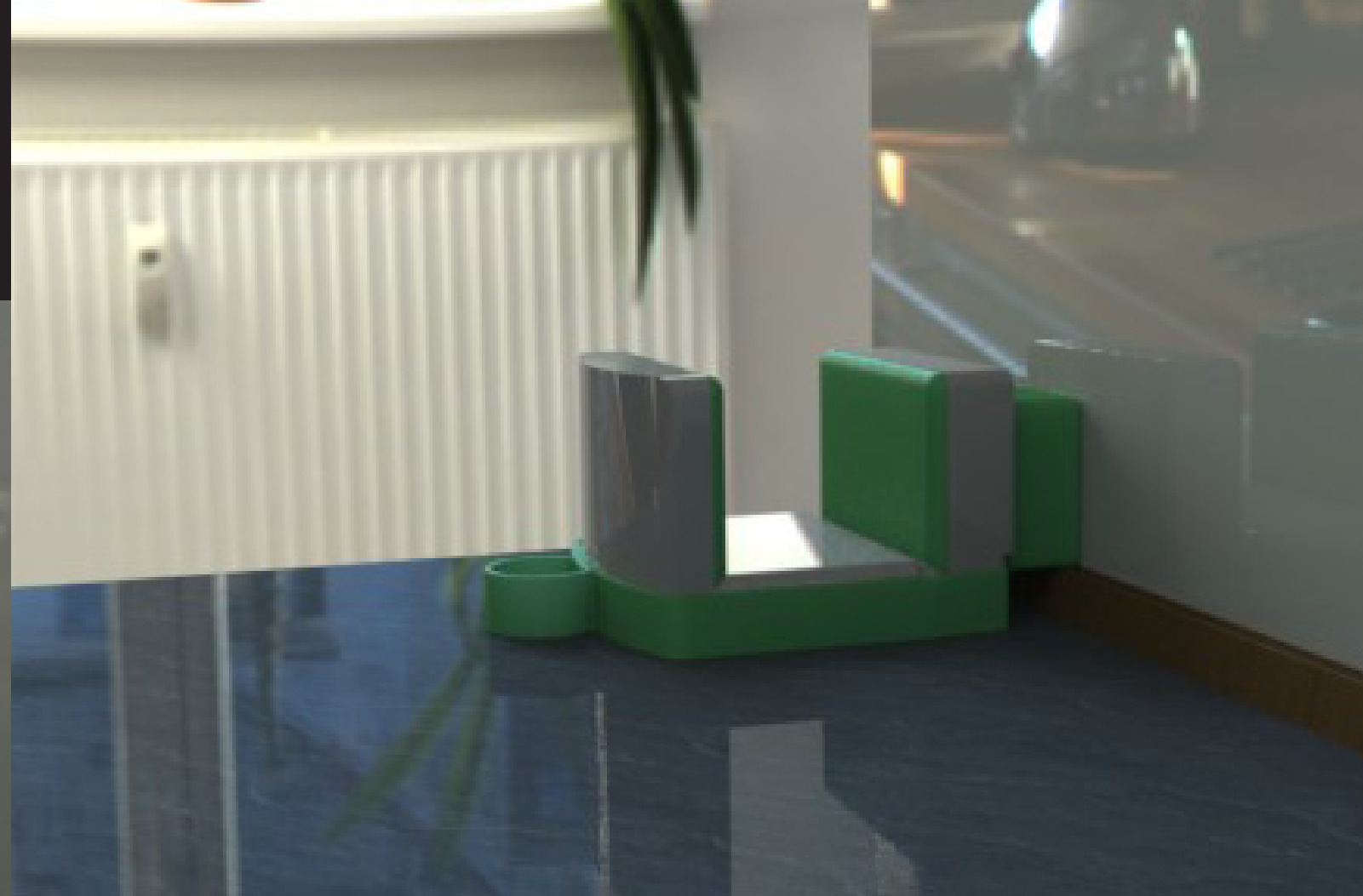


The most difficult moment opening a container is the first twist, when the pressure is inside the jar or the lid is attached to the bottle by small plastic tabs. After the first twist is made, then turning is not difficult anymore. At this point, we can choose to:



SAVE THE PRODUCT

If the product is used often, which would be the case of a person that has arthritis, it can be left outside for convenience. If the product is not used in an every day life basis, it can be put back in the closet until is needed again.



RUBBER BLOCK TO AVOID THE WOODEN FRAME

Many kitchens, mainly the old ones, have a wooden frame that goes around the counter-top corner. To avoid that this corner decreases the stability of the product, a rubber block is introduced in the product package. This rubber block can also be used to hold containers that are smaller than the limit of the product.

CONTAINER TYPES

DUO-Grip adjusts to containers with a diameter from 50 to 100 millimeters. Using the rubber block, the diameter is decreased from 50 to 25 millimeters. The minimum height of the container must be 60 millimeters, and there is not maximum height. Regarding shape, it adjusts to circular, square, rectangular and polygonal profiles.



DUO-Twist can open lids from 20 millimeters to 90 millimeters, with no specific shape or height.



GENERAL DIMENSIONS

