

PERFECTLY CONVENIENT FLUID REFILL

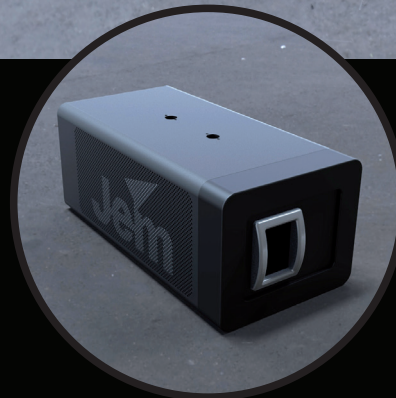
- FOR BOTH FOG & HAZE

With the Jem DUAL you no longer have to refill your smoke devices several places with several fluids.

- With the central 10 liter fluid base you can perform fluid refilling wherever you like, and where it is convenient for you.
- The special Jem DUAL smoke fluid delivers perfect fog and haze, for all your attached smoke heads.

You can put together the smoke heads you like and need in the system.

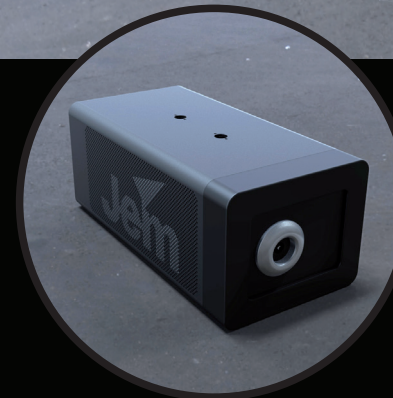
The split system allows heads to be installed in inaccessible areas like trussing, ceilings or floors.



HAZE HEAD

The haze head offers a great homogeneous and long-lasting haze.

- Continuous 2500 m³/min coverage per head from the 900 W heat exchanger
- Low fluid consumption and long hang-time for greater economy
- Compact and solid design for powerful and reliable operation; floor positioned or truss mounting
- Heads can be positioned up to 50 meters away; up to 6 heads in one system



FOG HEAD

The fog head offers a great white dense fog for an amazing effect for the audience.

- Continuous 580 m³/min fog output per head from the 1150 W heat exchanger
- Compact and solid design for powerful and reliable operation; floor positioned or truss mounting
- Heads can be positioned up to 50 meters away; up to 6 heads in one system



REMOTE CONTROL

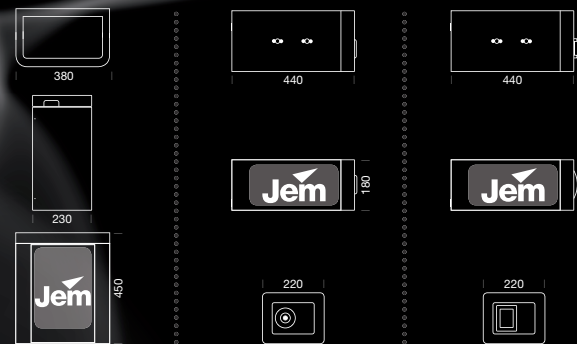
No more problematic controlling on several remotes. Now it is possible to control all attached smoke- and fog heads using one single remote.

- Pre-installed functions secures no lack of smoke in the club
- Small and durable
- Bi-directional feedback via RDM for easy troubleshooting

THE COMPLETE SMOKE SYSTEM FOR THE **CLUB**

Jem DUAL gives you all you need; perfect fog, perfect haze, high performance and a compact Scandinavian design specialized for clubs.

Jem DUAL is the only smoke system
you need!



BASE UNIT

Installation
Orientation: Floor or wall mount

Performance
Fluid pumps: Oscillating piston, high pressure X3
Fluid lifting height: 10 meter
Fluid capacity: 10 l
Max. attached heads: 6.
(Combination of haze and fog in pairs)

Construction
Housing: Steel and ABS plastic
Dry weight: 11 kg

Connections
Power connection: 3-pin IEC male socket
Remote control: 3-pin locking XLR
DMX data: 3-pin locking XLR

Electrical
AC power: 220-240 V nominal, 50 Hz
Main fuse: 3.15 AT (slow blow)
230 V, 50 Hz: 918 W, 5.85 A

Thermal
Maximum ambient temperature
(Ta max.): 40° C (104° F)
Exterior surface temperature, steady state: 50° C (122° F)

FOG HEAD

Installation
Orientation: Floor or in truss mount

Performance
Heat exchanger: 1150 W, direct thermal protection
Max. fog output (approx.): : 580 m3/min.
Warm-up time (approx.): 9 min.
Max. fluid consumption: 70 ml/min

Construction
Housing: Steel and ABS plastic
Dry weight: 14 kg

Connections
Power connection: PowerCon male socket
Remote control: RJ-45 to base

Electrical
AC power: 220-240 V nominal, 50 Hz
Main fuse: 6.3 AT (slow blow)
230 V, 50 Hz: 1190 W, 5.2 A

Thermal
Maximum ambient temperature
(Ta max.): 40° C (104° F)
Exterior surface temperature, steady state: 50° C (122° F)
Max. nozzle temperature: 200° C (392° F)

HAZE HEAD

Installation
Orientation: Floor or in truss mount

Performance
Heat exchanger: 900 W, direct thermal protection
Coverage volume (approx.): : 2500 m3/min.
Warm-up time (approx.): 6 - 8 min.
Max. fluid consumption: 10.5 ml/min

Construction
Housing: Steel and ABS plastic
Dry weight: 11 kg

Connections
Power connection: PowerCon male socket
Remote control: RJ-45 to base

Electrical
AC power: 220-240 V nominal, 50 Hz
Main fuse: 6.3 AT (slow blow)
230 V, 50 Hz: 1190 W, 4.13 A

Thermal
Maximum ambient temperature
(Ta max.): 40° C (104° F)
Exterior surface temperature, steady state: 50° C (122° F)
Max. nozzle temperature: 200° C (392° F)

Martin
by **HARMAN**

Jem DUAL