

# Product report

Ana Goga MSC4 -ID 2012



# Spider Trucks



## Abstract

This report presents a new trucks design for a longboard .The overall product will be presented, Together with specific details that make the product unique. The design process of developing the product can be seen in the process report.

Project title: Spider Longboard Trucks

Group number: MSC04 -ID

Duration: 01/02/2012- 08/08/2012

Year: 2012

Name: Ana Goga

Confidentiality status: Accessible to the public

Supervisor: Kaare Eriksen

Pages: 11

Editions: 4

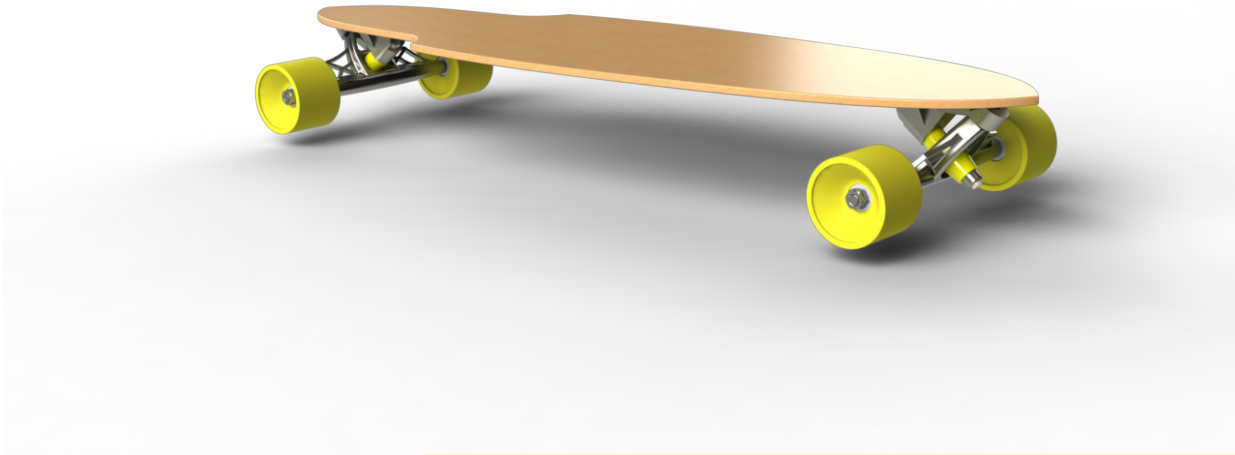
Volumes: 2





# The product.....

Smooth Cruising Ride



Fast Adjusting Solution

Structure Design



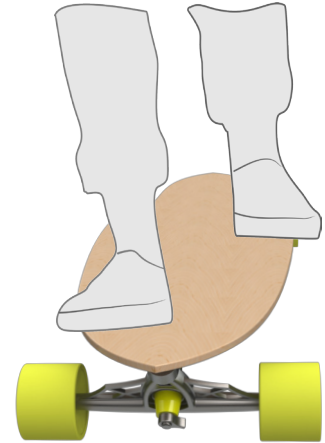
Function and Aesthetics



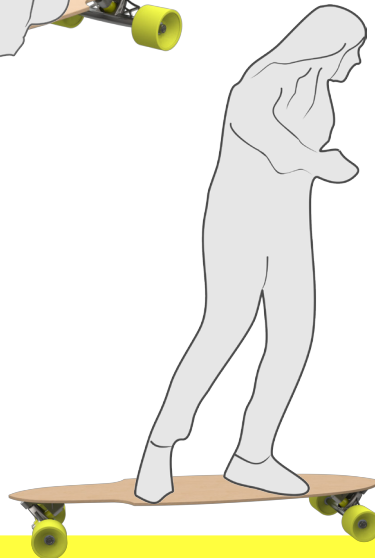
# Usage

---

Change fast the riding type





Carry heavy weight load



Generate higher speed

# Details

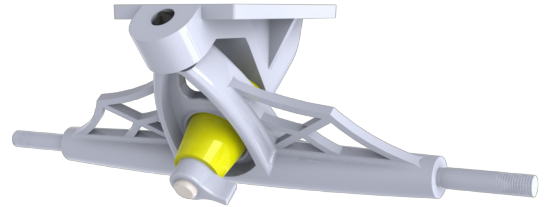
	Dimensions	Material	Manufacturing	Color
	56 mm 78 mm Ø5 mm 40°	Aluminium alloy	Casting	Black White Dark grey
	244 mm 34 mm	Titanium alloy	CNC	Black White Dark grey
	20 mm Ø19 mm Ø10 mm Ø25 mm	PU	Injection moulding	Customizable
	Ø13 mm Ø19 mm	PU	Injection moulding	Black
	22 mm Ø 10 mm Ø 16 mm	Stainless Steel	Casting	Customizable



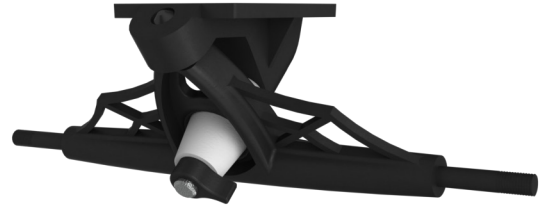
# Customization

---

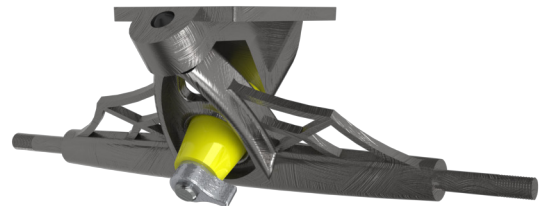
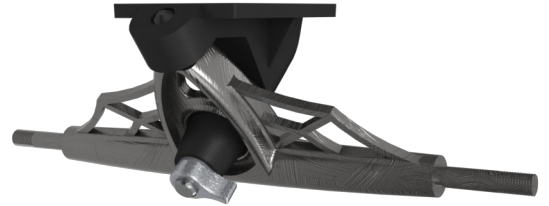
The bushings come in various colors and can be customized depending on the riders preference.



The baseplate, trucks and hanger have simple colors that can be easily matched with the graphic design of the deck .



The king pin lock nut can come in various colors depending on the riders preferences.





# Assembling



## Mounting trucks on the deck

- Determine which holes are appropriate for the trucks and deck
- Place both trucks outward, so the pivot bolt is pointed inward
- Align the holes of the trucks to the ones of the deck and note them
- Orient the trucks to allow access to the deck holes noted earlier
- Flip the truck down onto the deck. The adequate screwholes are accessible
- Lift up the deck and tighten with the hand the screws from underneath
- Tight the truck bolts evenly using the Allen wrench

## Mounting tool

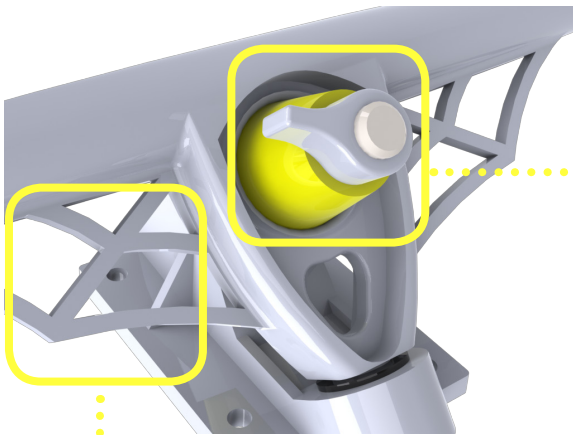


## Mounting trucks on the deck

- Introduce the king pin through the baseplate
- Place than the bottom bushing through teh king pin
- The hanger is introduced through the kingpin
- Orient the top bushing with the smaller diameter upwards and place it through the king pin
- Tight the assembly with the king pin lock nut



# Close-up

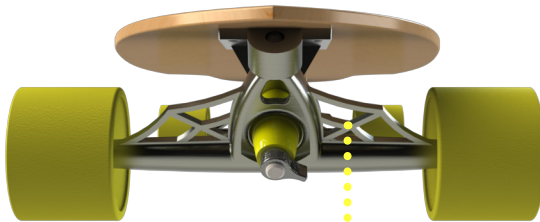


Easy to adjust

loose and tight the king pin

Stable and strong structure

two times stronger and lighter than steel



'Shocking' aesthetics

spider web inspiration

# Elements packaging

Deck

2 x Trucks

4 x Wheels

2 x Hanger and axle

8 x Bearing

2 x Pivot bushing

4 x Axle nut

2 x Lower cup washer

4 x Axle Washer (speed rings)

8 x 3mm Allen bolt

8 x Speed Ring

2 x Kingpin

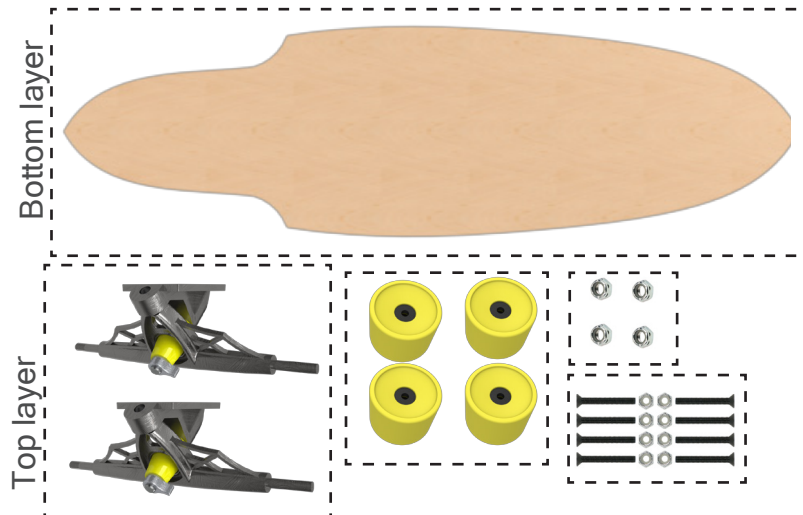
4 x Bearing Spacer

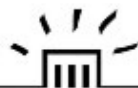
2 x Top cup washer

4 x Lock nut

2 x Kingpin lock nut

Box scheme





ARKITEKTUR & DESIGN