

The further development of a foodscape approach based method for assessing action and intervention opportunities in a local community food environment.

Line Mathilde Illeris Bundgård and Nethe Katrine Jørgensen
4th Semester Integrated Food Studies



Relevance

Existing planning tools are mainly developed on the grounds of theory and by researchers only. The objective of the thesis was therefore to optimise a Local Community Foodscape Assessment Tool (LC-FAT), which was not fully developed. The further development should therefore include the involvement of experts, mediators and end-users to make the tool more feasible in practice.

Sydhavnen is a socially vulnerable area and represents an opportunity, when it comes to the development and implementation of successful and sustainable health promoting interventions.



Methodology

The methods applied within the thesis are exclusively qualitative with the use of interviews and an urban songlines approach. The expert and mediator interviews were used to include the knowledge, experiences and perspectives of various important actors in order to further develop a Local Community Foodscape Assessment Tool (LC-FAT) towards the ideal in terms of being feasible for the assessment of action and intervention opportunities in a local community food environment. The urban songlines approach was applied to test the method's appropriateness for investigating the end-users' perspectives of the local foodscape of Sydhavnen.

Outcome from interviews

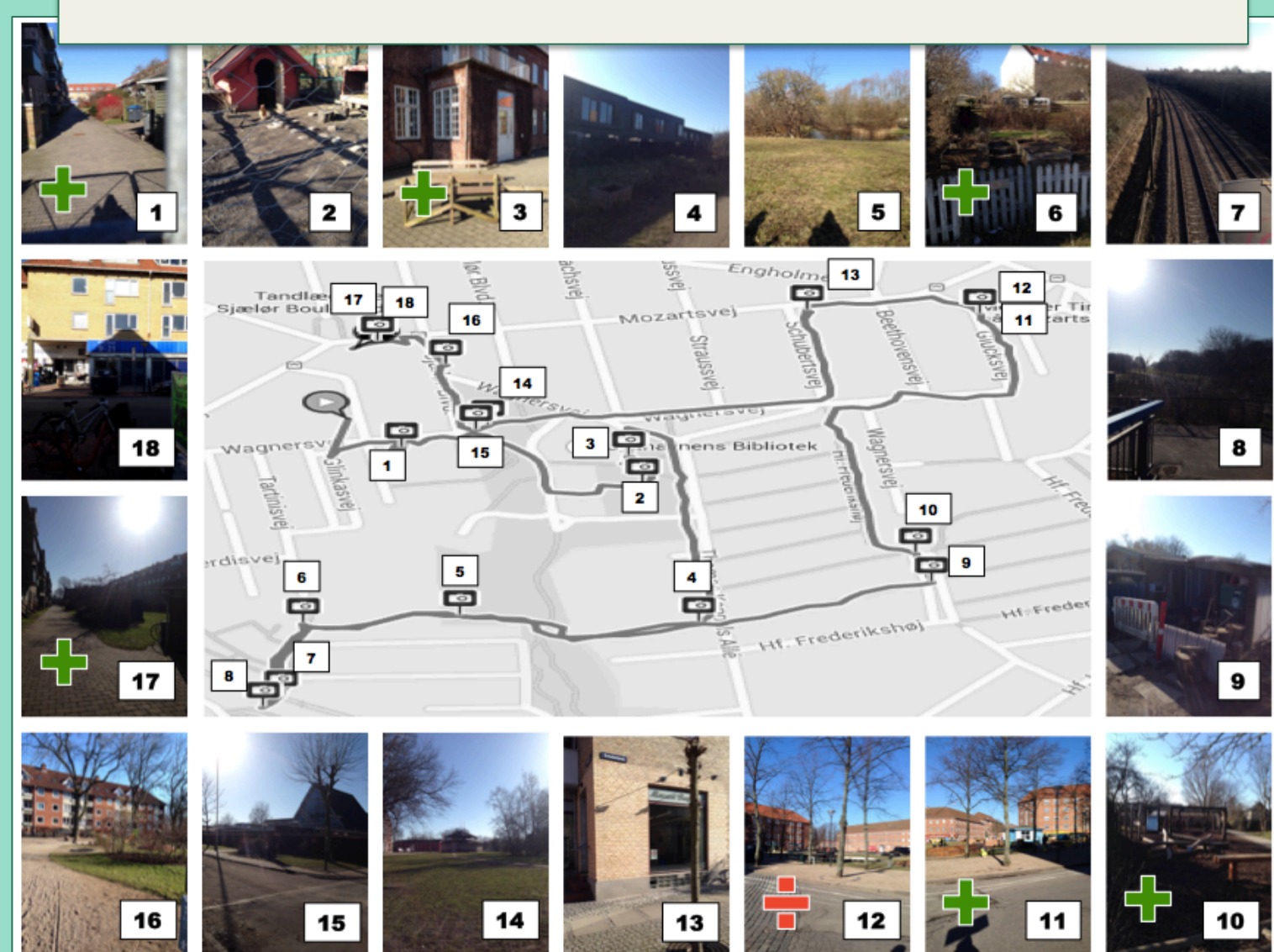
Experts' feedback on the LC-FAT:

- Missing user involvement
- Change chronology and add a guide for using the templates

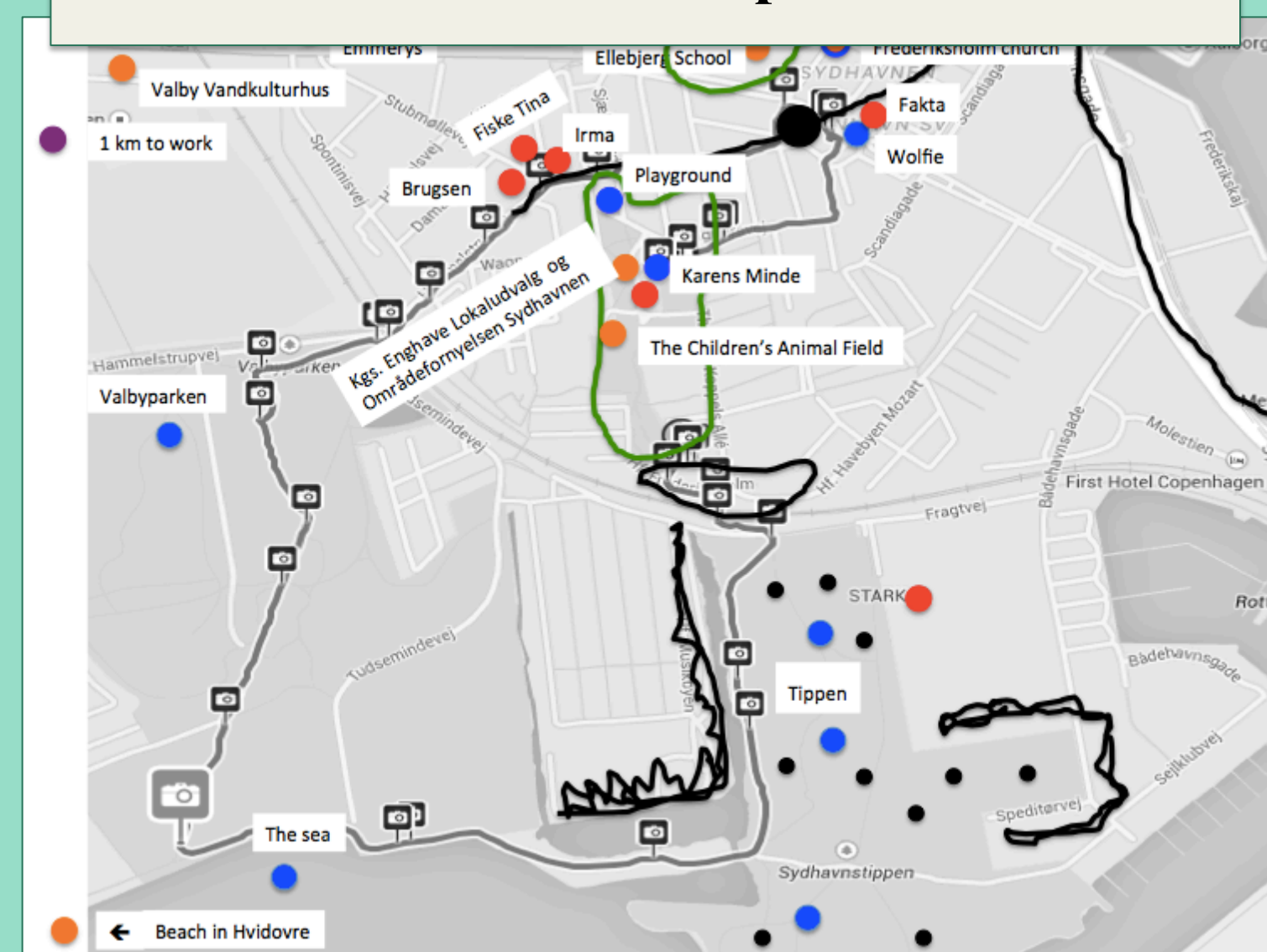
Mediators:

- Identified health initiatives in Sydhavnen

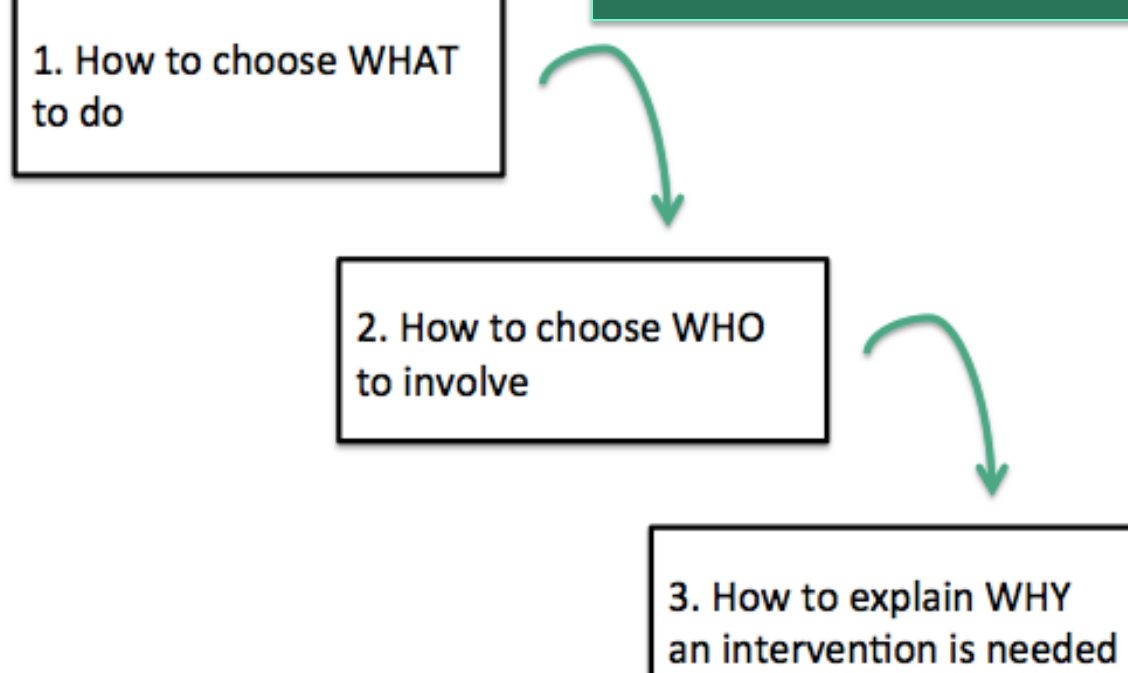
Outcome from the urban songline method



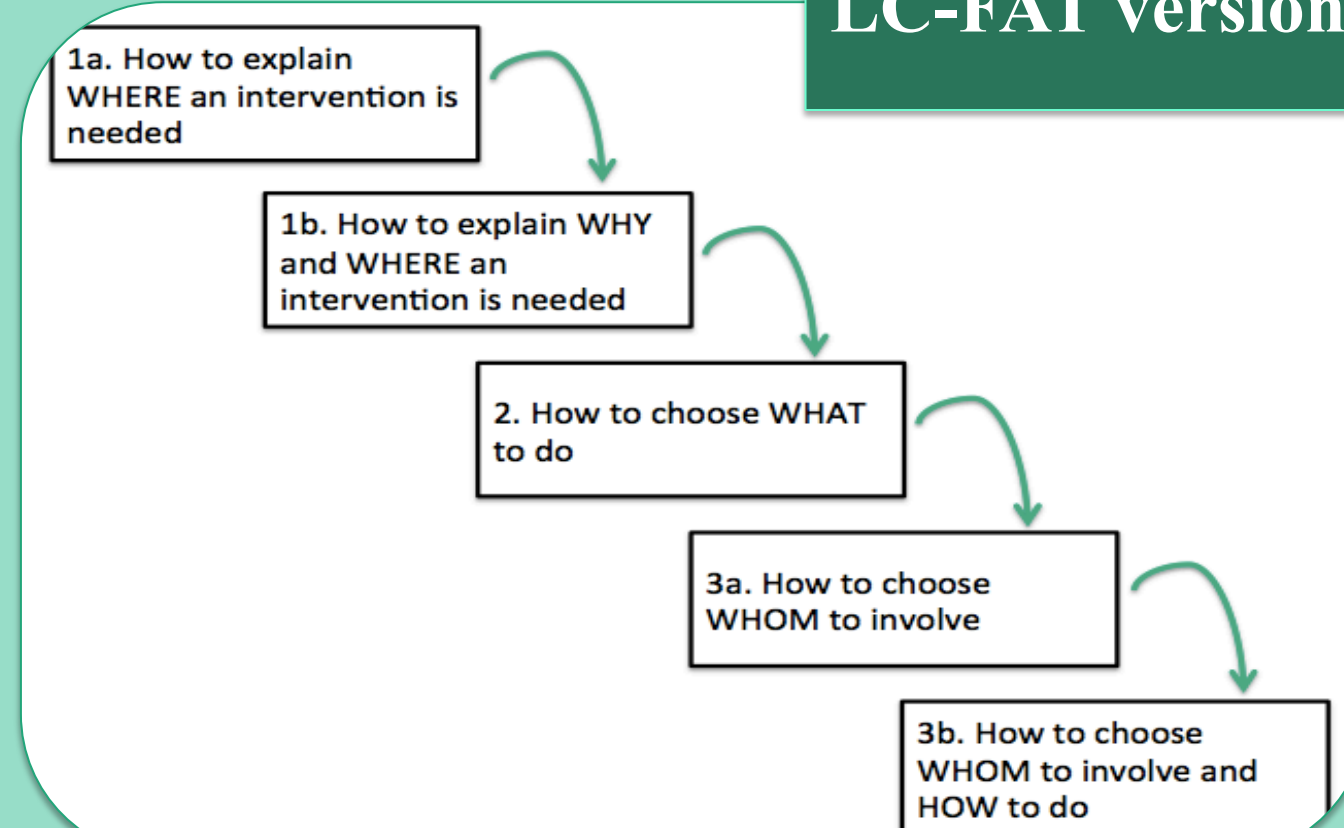
Outcome from follow-up interviews



LC-FAT version 2.5



LC-FAT version 3.0



Conclusion

On a basis of practice experiences it was possible to further develop the LC-FAT into a new version, which could be more feasible in practice. The urban songlines method proved adequate to obtain knowledge about the end-users' perspectives of Sydhavnen as their local foodscape.

Future testing of LC-FAT version 3.0 is necessary to test the feasibility of the tool in practice. It might be relevant to establish an easy access to the tool through an app or the internet.